

Notes 1971 the Polar Regions

Richard Brooke

The Arctic

During the summer many expeditions with a part-mountaineering objective were active in Greenland.

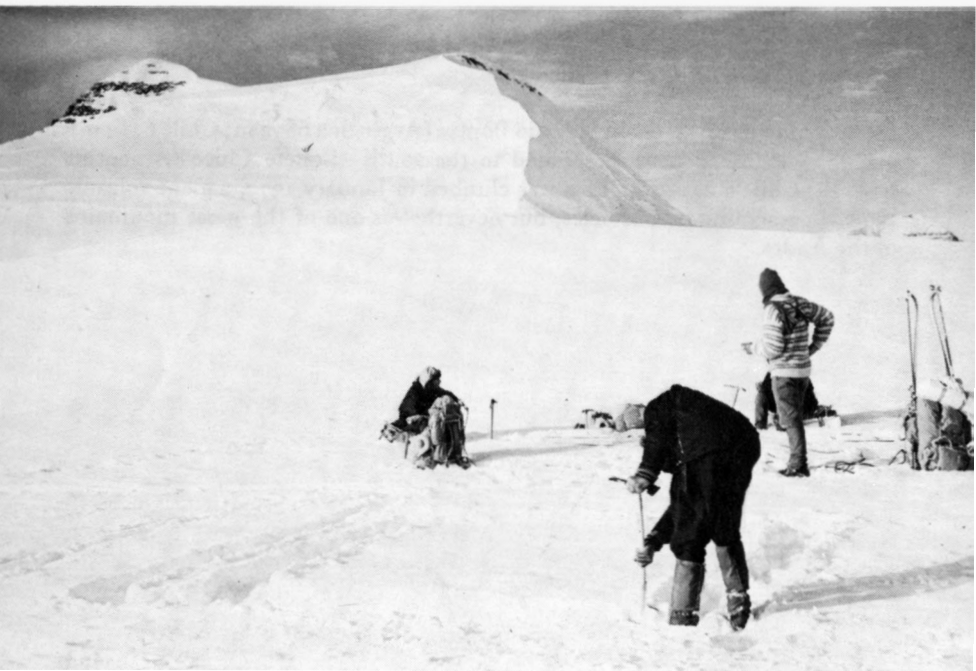
Roscoebjerg (lat 71°N) These peaks, which rise to 1500 m, were visited by Malcolm Slesser and party. Ten summits were climbed, nine first ascents, the other having a paper under a stone on the top recording an ascent by the Swiss in 1934.

Staunings Alps A four-man party from the University of Lancaster climbed four peaks in the Bjornbos glacier area—one was Karabinerbjerg, climbed by Lord Hunt's party in 1960.

Milne Land (west of Scoresbysund) An American expedition made three first ascents of peaks of 1500–1800 m in the Syd glacier area.

Watkins Mountains Expedition—Phase 2, 1971 An Anglo-Danish party of five, led by Alastair Allan, landed at Kiviogs Fjord on 19 July. They relayed loads over a 300-m pass and descended on the far side to the Rosenborg

95 *Camp below Gunnbjorns Fjeld, summit on the left. Photo: Watkins Mountains Expedition*





96 *Peaks in the Cap Farvel area.* Photo: R. Gribbon

glacier. An attempt to penetrate the range by way of a steep and narrow ice-fall at the glacier head was foiled by the unstable nature of the fall and the danger of stone-fall and avalanche. An alternative route was found by way of the Christian IV glacier system, the Korridoran and Ginos glaciers. On 6 August the whole party made the second ascent of Gunnbjorns Fjeld (approx. 3700 m). The route followed the steep, knife-edged snow of the North-west ridge (for first ascent of the mountain by the South ridge in 1935 see *A.J.* 48 54). The party reversed the outward route back to the coast.

Watkins Mountains—University of Sheffield Geological Expedition

From the expedition base on Wiedemann Fjord, two members sledged up the Kronberg glacier past Ejnar Mikkelsens Fjeld and made the first ascent of Borgetinde (3380 m) from the north. This is said to be the second highest peak to have been climbed in Greenland. Ejnar Mikkelsens Fjeld has been somewhat demoted as at least two peaks higher than Borgetinde have been located south-east of Gunnbjorns Fjeld.

Ingolfsfjeld (2560 m) above Kangerdlugssuatsiaq. The first ascent of this impressive peak was made by a Yugoslav expedition by the East ridge. The final eight pitches on the summit tower were grade V to VI. Ascent and descent took seventy-five hours. A fortnight later the South ridge/South-west face of the mountain was unsuccessfully attempted by a University of London Graduate Mountaineering Club expedition. Later, the Yugoslavs climbed other minor peaks in the area, while the British party sailed north and climbed four peaks in the Steenstrups Nordre Brae area.



97 *The Minster*. Photo: Irish Greenland Expedition

Kap Farvel Area A party from the University of St Andrews led by Philip Gribbon climbed thirty-four summits of 1200–1800 m, despite very changeable weather and a three-week delay waiting for the arrival of equipment delayed by ice conditions.

A little further north an Irish expedition led by J. Lynam was based at Tasermiut Fjord. The following climbs were made, in spite of the bad weather—Minster (1870 m), first ascent, and seven other first ascents of peaks up to 1912 m; a new route on Cathedral (2000 m), first climbed 1968.

A French expedition attempting Apostelen Tommelfinger nearby was abandoned after an accident.



98 *Mount Asgard*. Photo: D. K. Scott

Evighedsfjord region, West coast (lat 66°N) An Army M.C. expedition made eleven first ascents from a Base Camp on the north shore of Kanguissaq. An attempt on the highest peak of the area, Pt 2050 m, was abandoned due to snow conditions.

Future Prospects The attitude of the Danish authorities towards Greenland mountaineering would appear to be hardening. Permission is likely to be more difficult to obtain in the future and some advance provision may have to be made to cover the possibility of expensive rescues.

Baffin Island The Anglo-American Baffin Island expedition climbed nine virgin summits during July and August. Climbs were also made on the North face of Bredidablik, the slabs and head wall of Mount Killibuck and the South ridge of the South peak of Mount Asgard.