

## ALPINE NOTES

	Year of Election
THE ALPINE CLUB OBITUARY :	
Powell, Major-General Sir C. Herbert, K.C.B. ...	1890
Stallard, G. ... ..	1893
Stein, Sir Aurel, K.C.I.E., Ph. D., D.Litt., D.Sc., Honorary Member ...	1909

MESSAGE TO THE SWISS ALPINE CLUB.—The following messages of greeting have been exchanged between the Alpine Club and the Swiss Alpine Club :

' On behalf of the Alpine Club we wish to send to our friends of the Swiss Alpine Club our best wishes for the New Year. May it not be long before we can meet once again to renew the old brotherhood of the mountains. Uf baldigs Widerluoge.'

(Signed) GEOFFREY YOUNG, President 1943.

LEO AMERY, President 1944.

The Swiss Alpine Club replied as follows :

' Au nom du Club Alpin Suisse, je vous prie d'adresser à nos amis de l'Alpine Club nos vœux les meilleurs pour la nouvelle année. Puisse-t-elle leur permettre de revenir bientôt dans nos montagnes où nous serons si heureux de les accueillir. Un sincère merci pour vos souhaits.'

(Signed) S. R. FURER, President S.A.C.

EIGHTY YEARS IN NEW ZEALAND.—A book under this title has recently been published by Simpson and Williams Ltd., Christchurch, New Zealand, from the pen of our Honorary Member Mr. G. E. Mannering. We hope to review it in our next number.

FROM CANADA.—Mr. F. S. Smythe writes, under date December 9, 1943 : ' I was up an 11,300 ft. peak the other day, in a temperature of  $-20^{\circ}\text{F}$ . and a 50 m.p.h. gale. Result : a frostbitten neck. One of the party was seriously frostbitten. Needless to say, these high peaks are mostly unascended in winter, and conditions are like high altitude work on Everest without a hot sun. Altogether, a pretty tough life. Winter is setting in and we have just had a five days' blizzard. There is ski-ing country as fine and extensive as the Arlberg and Davos rolled into one, and the powder snow is superb. The only thing I've got against the Rockies is the rock, which is abominable, the worst stuff I've ever climbed on. There are any number of great ice climbs to be done and in such a country it is best to look for snow and ice routes. The animal life is fascinating, and I've had an encounter with a grizzly ; but from all accounts the plant life is poor.'

TÄSCHHORN, SOUTH FACE.—The ascent of this face was repeated on August 8, 1943, by MM. André Roch, Georges de Rham, Gabriel Chevallez and Alfred Timières. Leaving a bivouac on the right bank of the Weingarten Glacier at 3.30 A.M., they attacked the face at 5 A.M., reached a snow shoulder at the head of the initial buttress at 10 A.M., and the arête near the summit at 5.35 P.M. They descended by the S. arête, reaching their bivouac at 10 P.M.

Their route would appear to have followed ours approximately to the point where we traversed up into and across the great couloir. Here, in place of the traverse on slabs attempted by Josef Lochmatter and accomplished by Franz, they continued up the precipice on the west wall of the couloir, without descending upon its slabs. By any one who has read 'A Memory of the Mischabel,' it will be remembered that at this same point, I called Knubel's and Franz's attention to this alternative up the cliff, and I wrote of it later: 'I still think it might have proved the less desperate alternative.' It interests me therefore to learn that the second party chose it by preference. It did not, however, lead as I had thought to the west arête; or if it did, the party did not proceed on that line. On reaching a small 'épaule neigeuse' (the snow upon which showing above the precipice I probably mistook for the crest of the west arête), they traversed on to and across the great couloir, on an upward diagonal parallel to and well above our traverse. This brought them to the same point, at the foot of the final 'diamond' of cliff, where our secondary couloir also in the end landed us. Without knowing as yet any details of their ascent, it would seem that, as Georges de Rham writes, their route was the same as ours up the first part and the last part of the face, and varied to the west up the middle section.

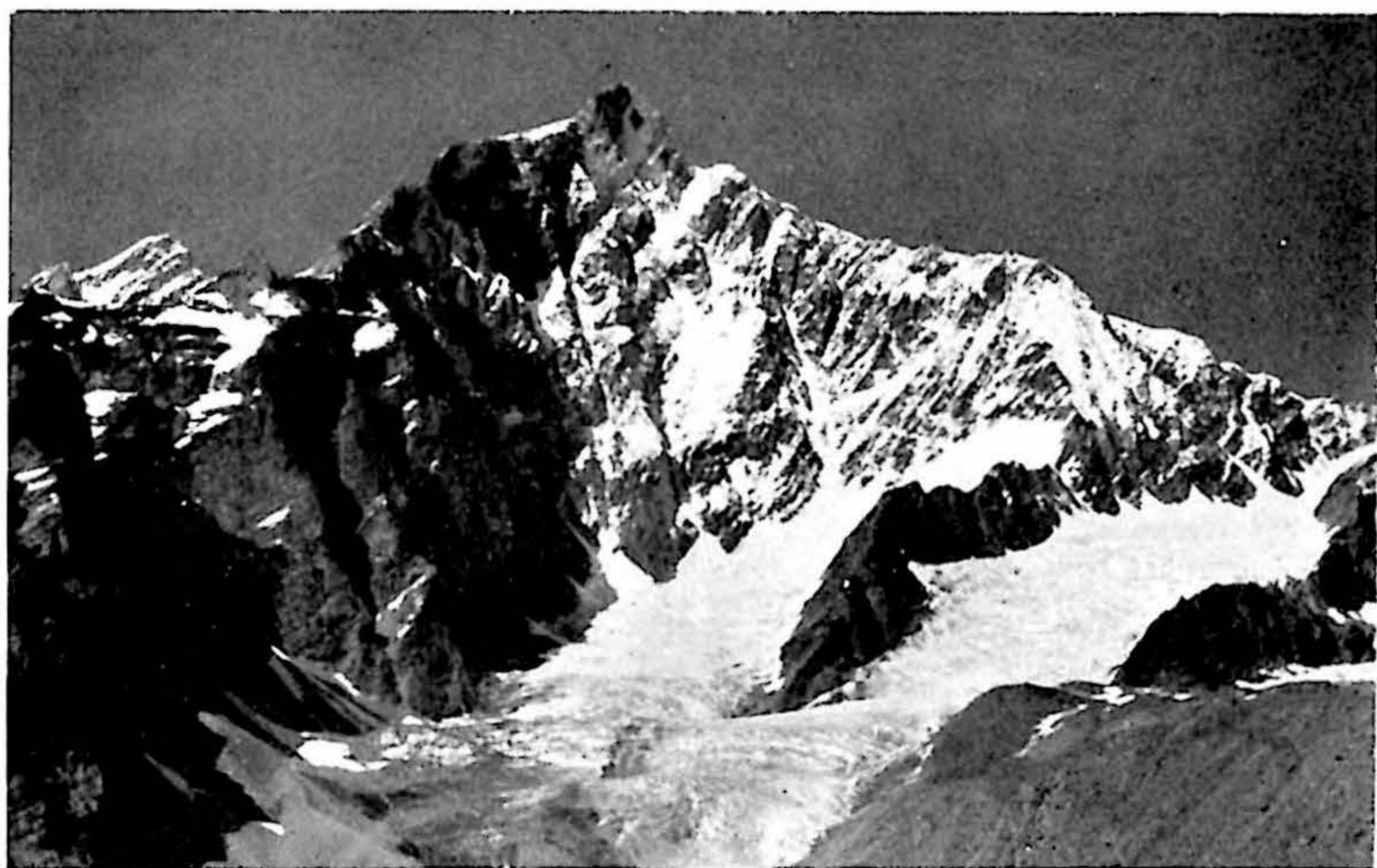
It speaks for the character of the climbing that the times taken by the first party of five (after our two ropes had joined up) and, thirty-seven years later, by the party of four, are much the same. Our party left the further Täschalp at 1.45 A.M., were on the top of the initial buttress at 7.30 A.M., and on the summit at 5.30 P.M. We descended to Randa by 11.30 P.M., and Ryan and I partly drove, partly walked to Zermatt, arriving there at 3.15 A.M.

Our Honorary Member, M. Charles Gos adds also some details: 'Roch l'a trouvé très dur et surtout très dangereux. Ils ont planté quatre pitons au terrible passage où Franz a passé devant, et ils en ont laissé un. J'ai dit à Roch, "G.W.Y. sera furieux . . ." Roch m'a répondu—"C'est possible; en tout cas moi, je ne remonte pas l'ôter." Roch ne comprend pas comment Franz a pu franchir le passage avec ses souliers à clous et sans pitons . . . Evidemment que Franz était Franz!'

Georges de Rham writes further that, a few days later, MM. Aubert, Dittert and Marullaz repeated the ascent, taking however, a route further to the east, which appears to be identical, except in its lower portion, with that followed by the guides Alexander Taugwalder and Karl Biener in 1935. They were exposed to continuous stonefall,



TASCHHORN, S. FACE. TRAVERSE OF GREAT COULOIR,  
1943 ROUTE.



TASCHHORN, S. FACE.

NOTE.—Both the 1906 and the 1943 route follow buttress in direct line toward summit, to rather less than half height of the face. Here 1906 line crosses great couloir diagonally upward to right, and by lesser couloir to foot of final peak. The 1943 line continues up buttress overhanging couloir as far as the 'snow shoulder.' Here, just below highest white triangle, it traverses great couloir at higher level, slanting upward to join 1906 route at foot of final peak, about level with snow hummock on S.F. arete. See also illustration *A. J.* 25, facing p. 119.

whereas M. Roch's party, profiting by a cold day when the face was almost continually shrouded in mist, noticed no stonefall. A note, and its subsequent correction, upon the ascent by the two guides in 1935 will be found in *A. J.* 47. 362, and *A. J.* 48. 185. In his oral account to me of the ascent, Taugwalder also declared he was not inclined to repeat it, and dwelt upon the danger they were in all the time from stones. As the two parties on the central face would seem to have been entirely free from this risk, while the two taking the eastern line both suffered from it, it is not impossible that the rock upon this eastern facet, under the great southern arête, is in fact more fragile and deciduous.

G. WINTHROP YOUNG.

EXPEDITIONS.—Last August M. André Roch's party repeated the N. route up the Dent Blanche, first ascended by Mr. and Mrs. I. A. Richards, with Joseph and Antoine Georges, on July 20, 1928 (*A. J.* 40. 376). A few days later M. Aubert's party repeated Dr. Piacenza's ascent of the Matterhorn by the Furggen ridge (*A. J.* 26. 80, 150 *sqq.*). La Marquise d' Albertas, with Edouard Frenod of Chammonix, has made the fourth ascent of the N. face of Petit Dru. The party was forced to bivouac 200 ft. below the summit.

M. HENRI FAES.—We learn that our distinguished Honorary Member, President of the S.A.C. 1926–28, has recently retired from the Directorship of the Federal research station at Lausanne for the culture of vines and trees, which he has held since 1926. All good wishes to him in his honourable retirement.

A CROSS ON THE DOM.—Through the generosity of the guides of the St. Niklaus and Saas valleys, a cross  $2\frac{1}{2}$  metres in height has been made, to be placed on the summit of the Dom. The cross was blessed by Mgr. Biéler, Bishop of Sion, early last August.

COLONEL JEAN MORIN.—By courtesy of the Editor, Ladies' Alpine Club Year Book, we are enabled to print this notice of Col. Morin, who was a member of the Alpine Club from 1929 to 1938.

Colonel Jean Morin was reported missing on March 24, 1943, on his way home from an important mission for the Fighting French Forces. His work in the cause of France had become increasingly valuable since he arrived in this country shortly before the armistice, and there is no doubt that he would have taken a prominent part in the restoration of his country at the end of the war. His devotion to duty, his expert scientific knowledge and meticulous care in the carrying out of his work, no less than his social gifts, were of great value both to the cause for which he worked so ardently, and as an important link between our two countries. He spoke English nearly as well as his mother tongue. He had a deep understanding and appreciation of the English and felt completely at home in this country, where

his many friends valued his intellectual qualities and the charm of his personality.

A striking tribute was recently paid to him in a broadcast by Col. Richard, who had only known him for a few weeks during his last mission, and who in that short time had learned to appreciate his personality and his outstanding ability. This was also recognised by General de Gaulle in a citation carrying with it the posthumous award of the Croix de Guerre with Palmes.

Mountaineering was a passion with him, and he was never so happy as when grappling with some tricky problem on the rock face of one of his beloved Chamonix Aiguiles. He always climbed guideless and he was one of the brilliant group of G.H.M. members of the French Alpine Club, who opened up many of the super-severe routes in the French mountains. He was a close friend of Jacques de Lépiney, the founder of the G. H. M., and just before the war he became President of the club.

He had an extraordinary knowledge of mountaineering in different parts of the world, and could describe in detail routes on mountains he had never seen. He also put in a great deal of work on the French expedition to the Himalaya in 1936. He shared in the compilation of the Guides Vallot—and himself covered many of the routes described. He took part in a great number of joint guideless ascents, or new routes on the mountains, and on some of them his wife accompanied him.

He was an enthusiastic camper, and spent many happy week ends at 'Bleau' tackling the strenuous routes on the rocks. He liked to camp high up near the start of his climb, and on many occasions spent several days on the glaciers above Chamonix as well as at Cézanne and on the Glacier Noir in the Dauphiné. Unlike most people he enjoyed a bivouac; he must have had some thirty to his credit.

In the last years before the war, he was irresistibly drawn to the Dauphiné, where the savage grandeur and austerity of the mountains seemed to strike a chord deep down in his nature. Here he planned and carried out a number of new routes on the peaks with the Vernet brothers and with his wife.

Jean Morin was not only a first class mountaineer but a brilliant musician; both as pianist and composer he could have made music his career. But though the music, too, is now silent, many happy memories of the mountains, of music and good talk are associated with him. He was endowed with exceptional qualities—artistic sensibility, breadth of intellect, integrity of character, courage and unswerving loyalty, above all to the cause of France in whose future greatness he confidently believed.

**SIR JOHN BRET LAND FARMER.**—Sir John Bretland Farmer, who died on January 26, 1944, at the age of 77, was elected to the Alpine Club in 1904, partly on his scientific qualification, but had resigned some years ago. He went to Magdalen College, Oxford, in 1883 and became

a Fellow in 1889, a post which he held till 1897. He was Professor Emeritus of Botany and formerly Director of the Biological Laboratories of the Imperial College of Science and Technology, London. He was awarded the Royal Medal in 1919 on the recommendation of the Royal Society of which he was a Fellow, and was knighted for his great services to botany. He did much valuable research and many of his pupils took high positions. He took great interest in the administration of the Royal College of Science and was instrumental in getting the necessary financial help for the establishment of a Department of Economic Botany with special reference to the cultivation of rubber. He wrote a number of books on botany and was recognised as one of the leading authorities.

Owing to the loss of his own records in an air raid and the storing of the Alpine Club notes away from London, I cannot give any detailed account of his climbs except those that I did with him. Before I went with him he had done a good deal in the Alps, particularly in the Combin district with J. C. Morland and Maurice Bruchez of Val de Bagnes, but he never wanted to climb big peaks, preferring to ramble on the hills, where he could study Alpine plants. Most of the expeditions I made with him were on relatively easy peaks and passes, in many of which Lady Farmer and Morland were our companions. Among the districts we visited were the Ortler where we stayed at the delightful Osteria Buzzi on the Italian side, the Combin and Arolla regions, Zermatt and district, and the Graians, which I fancy we liked best of all. Being both individualists we got on very well together in the Alps, as we agreed to the expedient of our own solitary rambles on off days if we felt inclined, and joining up for expeditions.

The kind of climb Farmer enjoyed most was a high mountain ridge of not too great difficulty where there was time to enjoy the surroundings. One memorable expedition was over the Monte Rosa ridge from the Regina Margherita hut. We met R. W. Lloyd at the hut, where he and Josef Pollinger were resting. Unfortunately Lloyd was ill and could not come with us. Pollinger, who had never done the climb, asked if he could join our party and we had the unique opportunity of leading a first class guide. I think we all enjoyed it, and I am sure he did.

When I began to climb with Farmer at Pen y Pass, I think in 1901, he was already a skilled rock climber. In fact, I saw in him the ideal leader for exploration that I wanted. He had a long reach and good balance, and above all a fine judgment of the structure of rock and the probable stability of holds and I learnt a great deal from his habit of testing all doubtful places. As a result we never got into difficulties or had anything approaching an accident. He was quite capable of climbing really difficult rock where I was glad to be second on the rope. I like to think that he had confidence in me and that we could do things together that I fancy he would not have attempted with any one else. We were emerging in those days from the gully epoch and with J. M. A.

Thomson's inspiration were tackling slabs and open faces more freely. Farmer had a genius for making use of small holds; this suited my own finger work and we tried many new things together. Perhaps the best of our climbs on Lliwedd was the Central Chimney. I had been looking at it for years and had brought Thomson up to it several times but he had not found the way. In my wanderings over the face I had seen most of it and only one very steep part was quite unknown. So in October, after the Alps, we made a special expedition to North Wales to try it. What happened was characteristic of our team work. The lower chimney which leads to the Birch Tree Terrace of the Roof Route and is also the start of the Central Chimney was slimy and objectionable, and Farmer said that this was owing to the presence of some particular vegetable growth due, I suppose, to damp conditions. We solved the problem in our own way. Farmer went for a ramble on Snowdon to seek the inspiration and sympathy of the silent hills, while I, like the mole, though I did not actually dig, worked out all the possible approaches. That was my job, while Farmer did the leading. Anyhow, the next day we never noticed the vegetation and Farmer led up easily. I think in reality the lapse was due to want of condition.

What most impressed people about Farmer was his unfailing good temper and kindness. He was always ready to listen and to help younger climbers. Though he could seldom be persuaded to talk he occasionally delighted us with some brilliant excursion into botanical fields which we enjoyed even when it was beyond us. He had the secret of bringing the best out of any material. Even the silent Thomson was persuaded to talk on climbs and became normal and human. Farmer never lost his philosophic detachment on a climb. I remember on the Meije, when we were descending from the top to the Brèche Zsigmondy, he was some way below at the end of our rope. I found it awkward and asked him if he could hold me. As he was perched on a sloping slab that overhung La Grave it did not seem likely, but all I wanted was a little 'wishful thinking.' I didn't get it: like a true philosopher he merely said that he hoped so but did not know. So as there was not enough rope for a convenient hitch I had to find an alternative, which came more easily than I had a right to hope for. The traverse of the Meije was a more ambitious undertaking than any we had done before in guideless climbing, and I should never have thought of it without perfect confidence in Farmer.

He picked up things so quickly and adapted himself to new conditions so readily that I felt quite sure of him. As an instance of this I may mention that we had done very little with crampons, and that only on dry glaciers and easy climbs. Eckenstein had been experimenting with crampons and asked us to come and practice on the Pilatte Glacier. To our great surprise we were passed as experts. Anyhow, when it came to the crucial test Farmer used them as if he had spent his life on the steep ice we met on the Meije slopes, and when we failed to hit off the way down by the Doigt de Dieu he wanted

to walk directly down towards La Grave. I had lost my axe and declined. I had not reached the stage of doing without an occasional dig in the ice. At the end of a long day we got to the moraine of the Tabuchet Glacier as dusk came on and there Farmer, being really tired, did show a little irritation when I wanted to go on, and said I might drop stones on him. So we spent the night there, not uncomfortably, with water that he found by some botanical wizardry and cocoa which I, like Martha, provided from the spare can.

Farmer took great interest in British climbing and was President of the Climbers' Club from 1910-1912, where he was a tower of strength in a difficult period. He became an Honorary Member just before his death. His personality and the humour of his speeches at the annual dinner of that club will be long remembered.

A. W. ANDREWS.

IN MEMORY OF COLIN KIRKUS<sup>1</sup>.—The story of British rock climbing has been one of progress by waves of exploration: periods of advance due to the brilliant exploits of a few outstanding climbers. Colin Kirkus was a rock climber whose name will always be associated with one of these waves of development, particularly when Welsh climbing history is under consideration. Although he was never a member of the Alpine Club, he was a rock climber of such outstanding merit that some record of his achievement is called for in the pages of our JOURNAL.

Kirkus discovered his special affection for the mountainous region of North Wales at the very outset of his career. Even his experiences in the Alps and Himalaya later in his life in no way altered this primary love of the Welsh hills, which he often said lost nothing of their grandeur for him as a result of his travels in other regions. As he lived in Liverpool it was relatively easy for him to visit North Wales at the week ends and for longer periods during the holiday seasons. Easy for one of his energy and toughness, for he was prepared to make the journey by bicycle; and history recounts how several times he walked from Liverpool to Helyg in order to get a week end's climbing.

If the Welsh mountains remained Kirkus' favourite climbing ground, his achievements were by no means confined to this region. In the Lake District, for example, he was the first to point the way on the East Buttress of Scafell with his difficult Mickledore Grooves climb. Marco Pallis, who was with him on this climb, writes: 'The steadiness of his nerves is well evidenced by the way he led the climb . . . Colin quietly and steadily worked his way up the final (very severe) pitch, of the most delicate nature throughout and with an extremely long run out. I should say that his most extraordinary gift as a climber was his power of staying immovable yet not overtaxed on extremely small and awkward holds. And it was the same quality which prevented age from affecting his climbing. He did not, when young, climb on his nerves like so many do, and therefore he did not burn himself out like

<sup>1</sup> See *Climbers' Club Journal*, 1943, Vol. 7, No. 2, 69, p. 168.

a meteor.' In Scotland he visited Ben Nevis, and it was in the course of a winter ascent on that mountain that he met with an accident. This occurred somewhere on Carn Dearg: snow lying on rock slid off, carrying down Kirkus, and his companion, Linnell was dragged off with him. Kirkus fell on snow after clearing the rocks and so escaped with injuries, but his companion was less fortunate.

In 1933 Kirkus went to the Himalaya with Marco Pallis' expedition<sup>2</sup>. One of the peaks ascended for the first time by members of that expedition was Bagirathi South (6866 m.) By his brilliant lead on the most difficult section of this climb he was responsible for the party's success in reaching the summit of the mountain. At the period when it was accomplished this ascent was perhaps deserving of greater recognition than it received at the time, because it demonstrated what could be done on a difficult Himalayan peak, of considerable altitude, by a small party carrying all their own equipment. The ascent involved spending five nights in bivouacs on the mountain. Kirkus has written an account of the climb in the book, *Peaks and Lamas*, by Marco Pallis<sup>3</sup>.

When the new series of Climbers' Club Guides to North Wales was projected, Kirkus was asked to write the Guide to Glyder Fach. This was a task which thoroughly appealed to him, and which he carried out with great energy and success. He not only added a number of new climbs, some of considerable difficulty, to those already known, but at the same time succeeded in producing what is perhaps the best guide-book of the series. He also wrote a book on climbing for young people, an excellent introduction to the sport for beginners called *Let's Go Climbing*<sup>4</sup>. He did this kind of thing well, for without any literary display he nevertheless succeeded in communicating what he had to say admirably because of his controlled enthusiasm for the subject on which he was writing.

But Kirkus' greatest claim to fame in the rock climbing world is through the series of new routes made by him on Clogwyn du'r Arddu; all of them of extreme merit and deserving of special recognition in that their accomplishment focussed attention on what is now recognised to be perhaps the finest cliff in Britain. By his feat in opening up this magnificent new climbing ground he is owed a debt of gratitude by all who seek first class rock climbs in our own mountains. Such routes as the Great Slab, The Chimney Route, Pedestal Crack, Birthday Crack and Curving Crack are indeed worthy successors to the two classics of the cliff, Longland's and Pigott's climbs.

There was something thoroughly genuine about Kirkus, whether one considers him in the light of his explorations, his writing or his toughness. His explorations in their own sphere have never been surpassed; and these he accomplished without taking unjustifiable risks or courting notoriety. He was successful because of a real enthusiasm for his favourite sport of rock climbing which he combined with extreme perfection of technique in this particular branch of mountaineering.

C. B. M. WARREN.

<sup>2</sup> *A. J.* 46. 306 sqq.

<sup>3</sup> *A. J.* 52. 153.

<sup>4</sup> *A. J.* 53. 276.

**SIR WILLIAM ELLIS TRUST FOR GUIDES.**—The Trustees are glad to be able to report that the Treasury have again allowed the transfer of funds to Switzerland for the purpose of paying pensions to beneficiaries under this trust.

In May last year, £120 were distributed and later on Sir William Ellis, conscious of the difficulties under which these persons must be labouring, gave another £50 which were distributed just in time for Christmas. It is hoped that the same can be done this year and Sir William Ellis has again promised an additional £50.

Members are reminded that if they are aware of any guide or his family who are in need of assistance, application should be made to :

C. T. Lehmann, Esq., 35 Mattock Lane,  
Ealing, London, W.5,

who will, as far as possible, investigate the claims and report to the Trustees.

**ADOLF AUFDENBLATTEN.**—We regret to learn of the death at Zermatt early this year of this well known guide, formerly the companion of Messrs. Courtauld and Oliver, at the age of 58.

**SOUTH AFRICA.**—Our member, Mr. William C. West writes : ' I recently spent eighteen days in the Cedarbergen, a large group in the Clanwilliam district about 150 miles from Capetown. Our party included Lt. Gen. Sir Roger Wilson (A.C.), Dr. R. Muir and Mr. H. W. Wright. We had a wonderful time, burying ourselves in the heart of the group with 8 pack donkeys and a couple of coloured boys. This group is under the control of the Forest Department and is the only place in South Africa where the Clanwilliam cypress (*Widdringtonia juniperoides*) flourishes. Mountain paths have been constructed and from Algeria Forest Station to Pakhuis Pass is a matter of 45 miles, with huts along the route at Middelburg, Crystal Pool, Boontjes Kloof, Heunings Vlei and Pakhuis, to visit which, the Forest Department encourages our members. Other paths radiate from this main one. We made our headquarters at Middelburg hut, with a few days at Crystal Pool hut, and climbed the majority of the nearby peaks. At this time of the year there was of course no snow. Some of the peaks culminate in fantastic and bewildering rock formations, but Wright is a brilliant cragsman and we accomplished all we attempted.'

**FRATERNAL GREETINGS.**—The following letter has been received with great pleasure from Mr. W. E. Colby, former President of the Sierra Club, under date December 15, 1943. It was presented by Dr. Hildebrand, whom the Club was delighted to welcome at the General Meeting of March 4, 1944 :

' The Sierra Club of California takes this opportunity of expressing to you through our former President, Dr. Joel H. Hildebrand, our

expressions of deep regard and sincere friendship. We are particularly pleased to learn through Dr. Hildebrand that your organisation is thoroughly alive and only awaits the cessation of the present unhappy state of affairs to resume its activities and normal existence. As secretary of the Club I was instructed by its Board of Directors at a recent meeting to express to you these sentiments.

Very sincerely yours,

W. E. COLBY.

QUARE FREMUERUNT?—Further research establishes the fact that Coolidge resigned from the Alpine Club in 1900 owing to his controversy with Whymper, the Committee having declined to intervene in the dispute. In tendering his resignation of membership, Coolidge also decided to terminate his work in connection with the new edition of Ball's Alpine Guide. See *A.J.* 54. 209. end of paragraph 2, hereby corrected.

INDEX TO THE ALPINE JOURNAL, VOLUME 53.—We are greatly indebted to our Assistant Secretary for his work in connection with the Title Pages and Index to Volume 53, which was generously undertaken by him at the urgent request of the Editor.

CORRIGENDA.—In the November 1943 issue, the following corrections should be made:

p. 101, paragraph 2, for 'he would' read 'would he'

p. 103, the quotation mark in fifth line from bottom of page should be moved four lines up, to be placed after 'narratives'.

p. 194, paragraph 5, for 'Munn' read 'Mumm'.

p. 195, paragraph 2, line 5, for 'l'Indes' read 'l'Index'.

A POWER STATION BENEATH THE MER DE GLACE.—The municipal authorities of Chamonix have sanctioned the experiment of hollowing a tunnel in the ice in order to catch and utilise the subterranean water for purposes of electricity. Two teams of guides and porters, working in four-hour shifts, had already by the end of last year constructed a tunnel 200 yards in length.

FATAL ACCIDENTS.—Among other fatalities, we learn with regret of the deaths of two Chamonix guides, Michel Payot and André Cachat, aged 38 and 41 respectively. Payot was killed by stonefall while crossing the schrund at the foot of the Charmoz-Grépon couloir. Cachat fell during the descent in bad weather from the central Aiguille des Pélerins, when his party had attempted to climb this peak by the Armand Charlet route from the S.W. It appears that a rock belay came loose, thus causing Cachat's fall. He fell 150 feet, and died within the hour.

On the Dent d'Hérens three Lausanne climbers, MM. Morthier, Bracher and Perrotet fell to their death while descending the icy N. slope of Pointe Blanche above the Tiefenmatten Glacier.

**RESCUED FROM A CREVASSE.**—On August 1, 1943, two students from Brig, MM. Imoberdorf and Rossi, were ascending the Hohmatten Glacier on their way up Monte Leone. Rossi crossed in safety a snow bridge spanning a wide crevasse, but the bridge broke while his companion was crossing. Rossi was able to hold his companion, but being unable to pull him out he was forced to tie the rope to his axe driven into the snow, leaving Imoberdorf suspended while he ran down for help. He returned in four hours' time, with Canons Rabot and Pont from the Simplon Hospice and five soldiers. Approach to the crevasse was difficult owing to the state of the snow, but eventually contact was established and Imoberdorf was sighted on a snow ledge, busy cutting holds with a pocket knife. Food and drink were lowered to him, and he was then hoisted up by means of a knotted rope. The victim appears to have been none the worse for his experience.

**THE REV. CANON A. C. DOWNER.**—Canon Downer, whose death occurred last year, graduated from Brasenose College, Oxford, in 1870, and took his B.D. and D.D. in 1908. He began his climbing career when many mountaineers are thinking of finishing it. At over eighty he made an ascent of a peak with his grandson and wrote: 'It snowed the whole way up and hailed the whole way down and we had the time of our lives.' That was characteristic. He could sleep at a moment's notice and insisted on forty winks on every summit. Only once did I know him to oversleep and a rescue party met him gaily singing his way home to his hotel. I use the word home deliberately. Wherever Downer was there was home. He carried homeliness with him along with his wig which, by the way, I twice rescued for him, once on Mont Dolent, when an unintentional glissade landed his party uncomfortably near a huge crevasse. His programme of peaks and passes was always wildly ambitious each year, but he would defend it by saying he enjoyed every expedition in prospect, whether it came off or not. He was one of the few mountaineers who ventured on Beachy Head climbs. He wrote some Alpine verse, both vigorous and accurate, and contributed several papers to the JOURNAL. He died in his ninety-seventh year, having been seventy-three years in orders.

H. SOMERSET BULLOCK.

**GOVERNOR SPOTSWOOD'S TRAMONTANE EXPEDITION.**—A writer in the ALPINE JOURNAL, in a reference which now eludes us, once suggested that we had in America a predecessor of the Alpine Club in the Tramontane Club of Virginia, founded in 1716 with the purpose of annual pilgrimage to the summit of Mt. George and drinking a health to the King. This seemed so useful for propaganda purposes that we referred to it in a presidential address before the American Alpine Club. Thereafter our luck ran out, for, curiosity getting the better of us, we learned from the Historical Society of Virginia that there never was a Tramontane 'Club.'

We were, however, referred to W. W. Scott's *A History of Orange County, Virginia* (1906), where the story of Governor Spotswood's Tramontane Expedition of 1716 is set forth in a chapter entitled 'The Knights of the Golden Horseshoe,' which includes the Journal of John Fontaine, a former ensign in the British Army, who took part in the expedition.

Governor Spotswood and a party of about fifty, taking with them an abundant supply of provisions and an extraordinary variety of liquors, started from the Germanna settlement on August 29, 1716, to visit the country west of the Appalachians. But for the frequent manifestations of loyalty in drinking the healths of the royal family and themselves, a better idea could be obtained of the route followed, but it appears to have been entirely within Spotsylvania, afterward Orange County.

Fontaine states that they came to the very head of James River 'where it runs no bigger than a man's arm from under a big stone. . . . We drank King George's health, and all the Royal Family's at the very top of the Appalachian Mountains . . . We had a good dinner, and after it we got the men together, and loaded all their arms, and we drank the King's health in champagne, and fired a volley, and all the rest of the Royal Family in claret, and a volley. We drank the Governor's health and fired another volley. We had several sorts of liquors, viz. : Virginia red wine and white wine, Irish usquebaugh, brandy shrub, two sorts of rum, champagne, cherry punch, water, cider, etc. . . . We called the highest mountain Mount George and the one we crossed over Mount Spotswood.'

There is every reason to believe that this crossing of the Blue Ridge in 1716 was the first ever made by any body of white men. The place is now known as Swift Run Gap. Governor Spotswood presented miniature jewelled horseshoes, small enough to be worn on a watch chain, to the gentlemen adventurers, giving rise to the fiction of the Knights of the Horseshoe. Hugh Jones, writing in 1724, states that on one side of the horseshoe was engraved *Sic juvat transcendere montes*, and on the other the tramontane order.

It will no doubt relieve the minds of our British colleagues to know that their organisation was not anticipated, but on both sides of the Atlantic we can approve the 'good spirits' in which the expedition was carried out.

J. M. THORINGTON.

THE STANDING ADVISORY COMMITTEE ON MOUNTAINEERING.—The Inaugural Conference was held at the Alpine Club, on February 5, 1944. There were present :—

Mr. I. C. Aitchison	...	...	Ski Club of Great Britain.
Mr. J. E. Q. Barford	...	...	Climbers' Club.
Mr. G. L. Bartrum	...	...	Alpine Club
Wing Commander E. B. Beauman			Alpine Ski Club
Mr. C. Chubb	...	...	Yorkshire Ramblers' Club
Mr. F. Lawson Cook	...	...	Fell and Rock Climbing Club

Mr. N. R. Davis	...	...	Yorkshire Ramblers' Club
Miss Dolling	...	...	Ladies' Alpine Club
Mr. Bryan Donkin	...	...	Alpine Club
Dr. J. M. Edwards	...	...	Climbers' Club
Dr. Wilson Hey	...	...	Rucksack Club
Mr. John Hirst	...	...	Rucksack Club
Mr. Robert Jeffrey	...	...	Scottish Mountaineering Club
Mrs. Worsley Leech	...	...	Pinnacle Club
Mr. C. T. Lehmann	...	...	Midland Association of Moun-
Mr. C. Scott Lindsay	...	...	Alpine Ski Club [taineers
Mr. Arnold Lunn	...	...	Ski Club of Great Britain
Mrs. N. E. Morin	...	...	Ladies' Alpine Club
Major T. U. L. S. O'Connor	...	...	Alpine Ski Club
Mr. H. L. Roberts	...	...	Wayfarers' Club
Mr. P. J. H. Unna	...	...	Scottish Mountaineering Club
Mr. Graham Wilson	...	...	Fell and Rock Climbing Club
Mr. G. Winthrop Young	...	...	Alpine Club

In the unavoidable absence of Mr. L. S. Amery, President of the Alpine Club, and Mr. H. McRobert, Senior Vice-President, Mr. G. L. Bartrum, Vice-President, took the chair and opened the meeting. He conveyed Mr. Amery's message of very sincere regret that he could not be present.

He asked Mr. Geoffrey Winthrop Young to address the meeting.

Mr. Winthrop Young described how the necessity for such an organisation as the proposed Standing Advisory Committee had grown more urgent and more generally apparent as the war proceeded. He contrasted the limited assistance and advice to our war departments which we had been able to give through the Clubs acting individually with the large scale advice and assistance which the American clubs had been able to give to their Services.

A central organisation was needed to act as a clearing house for advice and personnel for Service Departments, and also to speak in the name of all mountaineers and climbers in this country on matters affecting the appearance and usage of mountain country, such as power schemes, deforestation, and the location of industry.

Thirdly, in view of the great increase in hill walking and climbing outside the Clubs it was essential that means should be devised for passing on our own special experience and advice to the newcomers. This could best be done through a central body.

Fourthly, during the war hill walking and climbing had been used in military training on a very large scale and more recently it had been introduced into pre-service training. The Army Cadet Force had asked officially for assistance in this training. Further requests had been received from industry, shipping lines, and educational authorities. It was necessary to co-ordinate all this work through a central authority.

He had, therefore, suggested this conference so that, if agreement could be reached, some collective organisation could be set up to deal

with these matters, supported by the authority, help and advice of all British Mountaineering Clubs.

Mr. Bartrum thanked Mr. Winthrop Young, and gave further details of the work which had already been done by the Pre-Service Advisory Sub-Committee of the Alpine Club. He then asked for opinions from the meeting.

General support was expressed and after some discussion, in which the value and precedent of the First Aid Committee of the Mountaineering Clubs was cited by a number of speakers, the following motions were agreed unanimously :

- 1.—That this meeting of representatives from the following Clubs :
- |                             |                                     |
|-----------------------------|-------------------------------------|
| Alpine Club                 | Midland Association of Mountaineers |
| Alpine Ski Club             | Pinnacle Club                       |
| Climbers' Club              | Rucksack Club                       |
| Fell and Rock Climbing Club | Scottish Mountaineering Club        |
| Ladies' Alpine Club         | Ski Club of Great Britain           |
| Wayfarers' Club             | Yorkshire Ramblers' Club            |

affirms the desirability of taking collective action in matters of common concern and interest to all Mountaineering Clubs in Great Britain.

2.—That for the purpose of giving effect to the foregoing affirmation there shall be established a committee representative of British Mountaineering to be called 'The Standing Advisory Committee on Mountaineering.'

3.—That the S.A.C.O.M. shall be an advisory body but with authority to express opinions on matters of common interest to mountaineers in cases of urgency.

4.—That the S.A.C.O.M. shall consist of not less than ten nor more than fifteen members, that the officers of the Committee shall consist of a Chairman and an Honorary Secretary, who shall be elected by the Committee from among their number.

5.—That the office and postal address of the S.A.C.O.M. shall be at the Alpine Club, 74 South Audley Street, W.1, and the Honorary Secretary of the Alpine Club for the time being shall be the convener of the Committee and shall be responsible for seeing that all communications addressed to the Committee are presently brought to their notice.

6.—That in view of the urgent matters requiring the immediate attention of the S.A.C.O.M., an *ad hoc* committee be immediately formed to attend to these matters and also to formulate an electoral system of Club or district representation on the S.A.C.O.M.; the *ad hoc* committee to hold office until December 31, 1944.

7.—That the following shall be asked to serve on the *ad hoc* Committee, who shall have power to co-opt :

- |                            |                  |                   |
|----------------------------|------------------|-------------------|
| The Rt. Hon. L. S. Amery   | J. E. Q. Barford | G. L. Bartrum     |
| Bryan Donkin               | Robert Jeffrey   | C. T. Lehmann     |
| Mrs. Worsley Leech         | Arnold Lunn      | Mrs. N. E. Morin  |
| Major T. U. L. S. O'Connor | A. S. Pigott     | H. L. Roberts     |
| W. M. Roberts              | Graham Wilson    | G. Winthrop Young |

The following motion was carried but with three dissentients :

8.—That the *ad hoc* Committee be asked to consider in addition to the matters for which the S.A.C.O.M. is being formed the following proposals as an electoral basis :

(a) That every Mountaineering Club (in the broad sense of that term) shall be entitled to nominate one representative for the S.A.C.O.M.

(b) That Clubs having a membership (excluding honorary members) in excess of two hundred shall be entitled to nominate additional representatives according to the table set out below :

Club Membership.	Number of additional representatives.
Over 200 and less than 500 ...	1
Over 500 ... ..	2

(c) The S.A.C.O.M. (initially the *ad hoc* Committee) shall elect by ballot from the representatives, nominated by the Clubs, the Committee (10—15) for the ensuing twelve months.

During the discussion on these motions, it was agreed that any member of the S.A.C.O.M. who was unable to attend a Committee meeting should have the power to appoint a deputy, and that it was desirable that he should do so.

It was suggested and generally agreed that in order to keep the size of the S.A.C.O.M. within limits, it would be desirable for some Clubs to agree on common representation.

Mr. G. L. Bartrum, referring to the fifth motion, pointed out that there was nothing to prevent the Committee carrying out its duties from any part of the country if it was thought desirable, but that for convenience and the maintenance of present contacts with Government Departments it was desirable to retain the same address for communications.

Several speakers, while supporting the proposal that for the moment an Advisory Committee only should be formed, thought that the Committee when formed might be asked to consider the formation of an association of British Climbing Clubs.

## REVIEWS

*Upon that Mountain.* By Eric Shipton. Pp. 222, with 31 full page illustrations and 4 sketch maps. 8 × 5½, Hodder and Stoughton Ltd., London, 1943. Price 12s. 6d.

In the calm darkness of the moonless nights,  
In the lone glare of day, the snows descend  
Upon that mountain ; none beholds them there,  
Nor when the flakes burn in the sinking sun  
Or the star beams dart through them.

FROM these elegant lines of Shelley's 'Mont Blanc' Eric Shipton takes the title of his third book, *Upon that Mountain*. In a sense the title may not be inappropriate, but mere adornment apart one soon has a