

THE ALPINE JOURNAL

THE
ALPINE JOURNAL

1968 (2)

1968
(2)

KEEP THAT C-O-L-D



AT BAY WITH A VISIT TO BLACKS

For the coming winter months make sure that your equipment is up to the best condition. One way of being sure of this, is by making a visit to any one of the Black's branches where you will find equipment, even to survive in the severest of winters.

Illustrated here are just two items of equipment to keep the cold out, these being Blacks Mountain Tent and the Summit Sleeping Bag. If you cannot call

write now for your FREE catalogue.

Write now to any of the addresses shown for your free 1968 Blacks catalogue.



BLACKS OF GREENOCK

(BLACK AND EDGINGTON LTD.)
INDUSTRIAL ESTATE · PORT GLASGOW
and
RUXLEY CORNER WORKS · SIDCUP · KENT

LONDON: 22-24 Gray's Inn Road, London, W.C.1.
LONDON: 53 Rathbone Place., Oxford Street, London, W.1.
BIRMINGHAM: 86-87 Broad Street, Birmingham, 15.
GLASGOW: 132 St. Vincent Street, Glasgow, C.2.
MANCHESTER: 263 Deansgate, Manchester, 2.
NOTTINGHAM: Shakespeare Street, Nottingham.
SHEFFIELD: 18-22 Corporation Street, Sheffield, 3.
STOKE-ON-TRENT: 40-42 Marsh Street, Hanley.
SUTTON: 250 High Street, Sutton, Surrey.

MOAC PRODUCTS

SAFETY HARNESS B.St. 8,000 lbs. min.
MOUNTAINEER'S FIRST-AID PACK
SNOW GAITERS · NYLON · Long & Short
BELAY GLOVES · ALLOY CHOCKSTONE
ETRIER PACK IN UNITS OF 3 STEPS

Available at all leading stockists. Details from:
63 Lancaster Avenue, Manchester 4

ROBERT LAWRIE, LTD.

Alpine and Polar Equipment Specialists

**54 SEYMOUR STREET,
MARBLE ARCH, LONDON, W.1**

Telephone: 01-723 5252

Telegrams & Cablegrams:

Alpinist, London, W.1

Business hours:

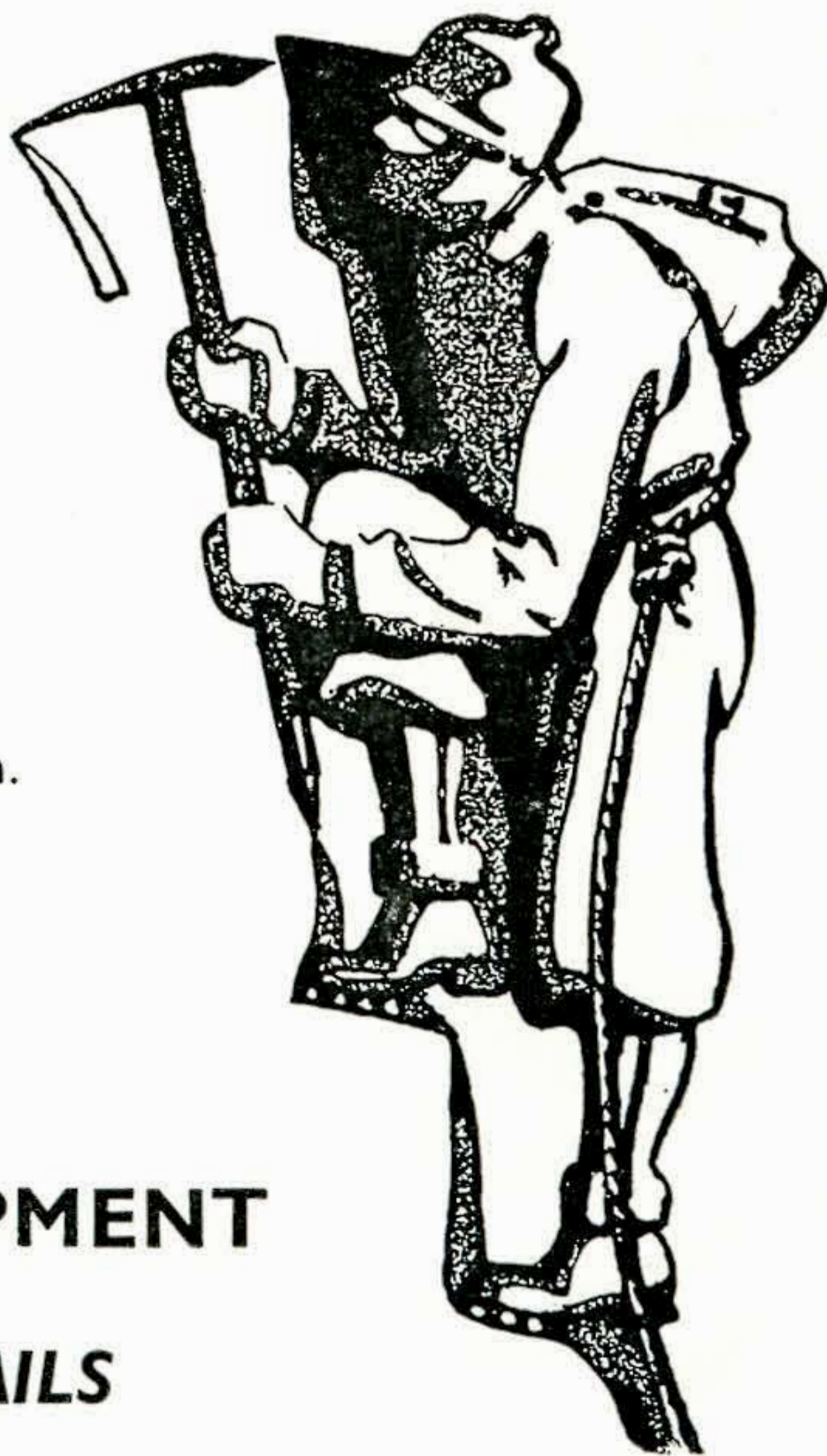
Mon., Tues., Wed. and Friday: 9 a.m.-5.30 p.m.

Late closing: Thursday, 9 a.m.-7 p.m.

Early closing: Saturday, 9 a.m.-12 noon.

**ALL CLIMBING
CLOTHING AND EQUIPMENT**

PLEASE WRITE FOR DETAILS





the big bag!

that goes on all the expeditions

The current British Antarctic Survey, the recent British Trans-Arctic Expeditions, the 1953 successful ascent of Everest . . . these and many other expeditions in the Himalayas, Andes and Antarctica, have been equipped with the big bags . . . the finest in the world . . . the Fairy down sleeping bags.



Sir Edmund Hillary wrote:
"You'll be pleased to know both Tensing and I used your bags in Camp 9 . . . as a matter of interest, Tensing gave me the unsolicited testimonial that his N.Z. bags were the best he had ever used. I don't think there's much doubt that your bags are the best that can be obtained anywhere in the world."

fairy down sleeping bags

the lightest and warmest yet made!

- U.K. STOCKISTS**
- | | |
|---|---|
| Aberdeen <i>F. Diack & Son</i> | Llanberis <i>Joe Brown</i> |
| Ambleside <i>Frank Davis</i> | London <i>Youth Hostel Assn.</i> |
| Birmingham <i>Frank Davis</i> | <i>All branches of Pindisports</i> |
| Capel Curig <i>Brennands</i> | Manchester <i>Ellis Brigham</i> |
| Edinburgh <i>Graham Tiso</i> | Newcastle-on-Tyne |
| Glasgow <i>Greaves</i> | <i>L. D. Mountain Centre</i> |
| Keswick <i>George Fisher</i> | Nottingham <i>Roger Turner</i> |
| Liverpool <i>Ellis Brigham</i> | Sheffield <i>Bryan G. Stokes</i> |

Internationally renowned products of **ARTHUR ELLIS & CO. LTD.**

HEAD OFFICE: Private Bag, Dunedin, New Zealand

“GASTON’S ALPINE BOOKS”

134 KENTON ROAD
HARROW
MIDDLESEX

TELEPHONE: 01-907 8549

MOUNTAINEERING, POLAR, CAVING, GUIDE-BOOKS,
NEW and OLD.

BOOKS AND LIBRARIES REQUIRED FOR PURCHASE



Kastinger

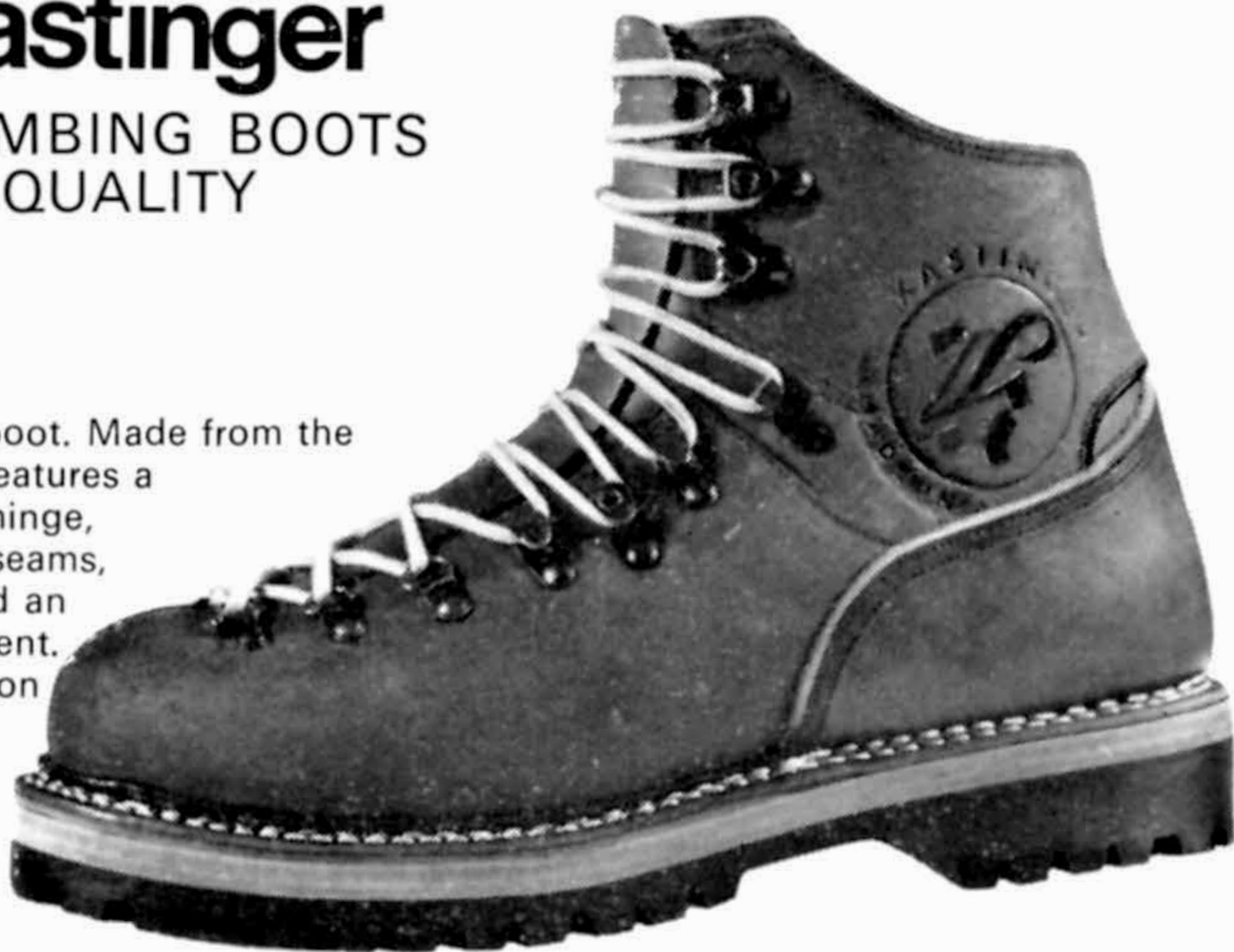
CLIMBING BOOTS
OF QUALITY

EIGER

EIGER is a very special boot. Made from the highest grade leather it features a built-in snow cuff, heel hinge, triple stitched soles and seams, special thermal lining and an exclusive hook arrangement. Wear it with confidence on the toughest expeditions.

PRICE £17 19. 6.

Write for details of the full range of Kastinger boots, Ajungilak sleeping bags, Vango outdoor wear etc.

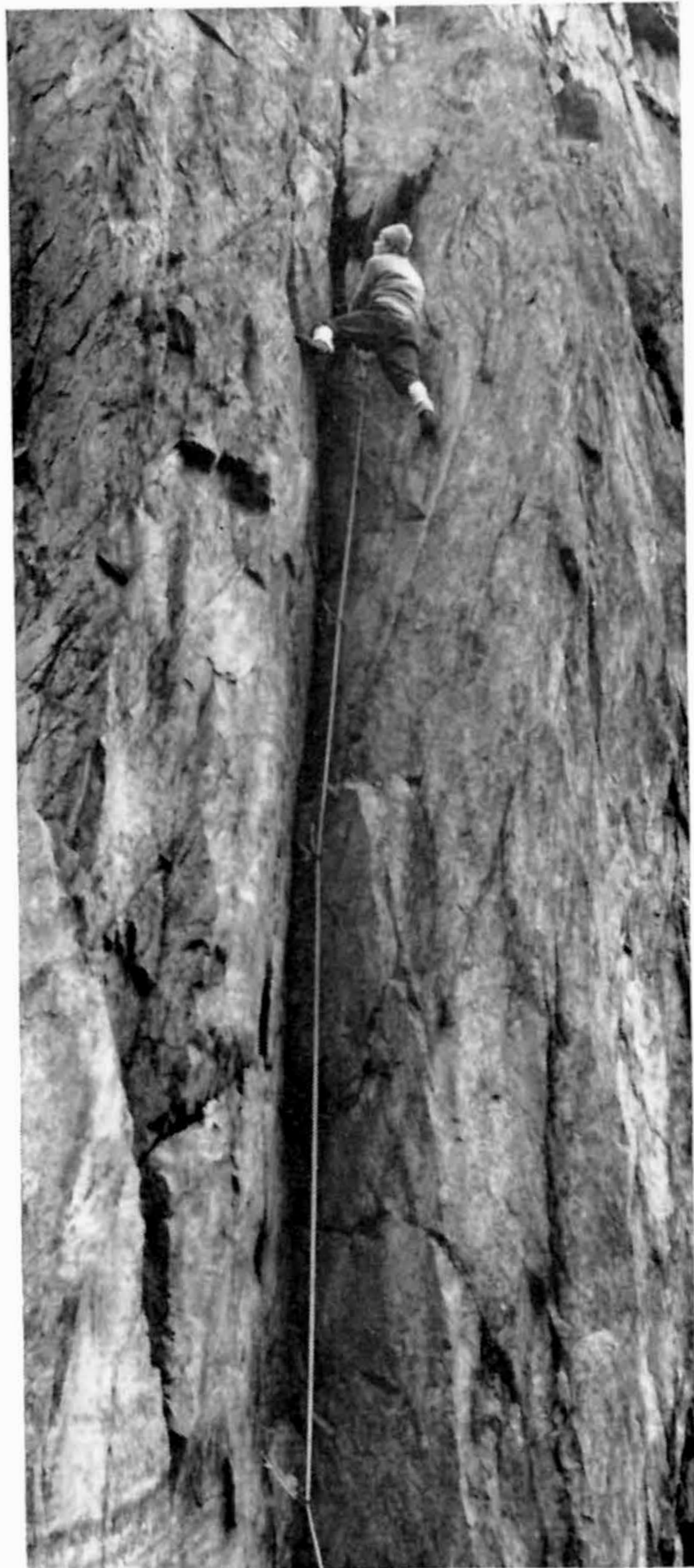


WRITE FOR FREE LEAFLET AND THE NAME & ADDRESS OF YOUR NEAREST VANGO STOCKIST TO:

VANGO (SCOTLAND) LTD.

356 AMULREE STREET . GLASGOW E.2 TEL: 041-778-5461





Photograph by John Cleare of Sargent/Gamma Ltd

HIGH ON BRANT DIRECT...

the vital link is VIKING

The bigger the challenge
the safer you are with
VIKING Nylon Ropes.

Mountain-proved,
laboratory-tested, VIKING
ropes are made by the largest
and most experienced
ropemakers in the World.

For the rough and the
smooth, VIKING is your
closest ally.



VIKING
Nylon Climbing Ropes

made by **British Ropes Limited**

WHAT IS THE SPORT OF ORIENTEERING?



The sport is a national game in Scandinavia with an ever increasing popularity in this country with clubs formed in many counties and countries. It is cross country running or hiking or mountaineering with the thrill of exercise, fresh air amongst the joy of natural scenery. The use of the Map and Compass is as simple as One, Two, Three if you use a Silva Compass.

Send 1/- and receive booklets and literature on the Silva System Compasses with details of the Sport of Orienteering.

Precision made by A. B. BRODERNA KJELLSTROM,
STOCKHOLM 60

Sole Distributors for Great Britain

B. J. WARD LIMITED



130 Westminster Bridge Road,
London, S.E.1
Phone: 01-928 6416/7



P · Y · G
PEN-Y-GWRYD HOTEL

Nantgwynant - Snowdonia

The home of British Mountaineering

LLANBERIS 211

GUESTS 368

Station - BETTWS-Y-COED

R.A.C., A.A.

Fully Licensed

Central Heating throughout

P · Y · G

MOUNTAINEERING, ROCK CLIMBING, CAMPING & SKI-ING EQUIPMENT &
CLOTHING SPECIALISTS

SUPPLIERS TO EXPEDITIONS & SCHOOLS



1, CANNING CIRCUS,
NOTTINGHAM.
NG7 3NE
Tel. 47230



Expert Service

'WE CLIMB & SKI OURSELVES'

...ed ... to Gr
London for separation.

Youth hurt in crag fall

A 20-year-old youth fell more than 70 feet yesterday while climbing crags at Bowder Stone, Borrowdale, in the Lake District.

James Patchett, of Dene Avenue, Lemington, Newcastle, was climbing with a party from the Northumberland Mountaineering Club on the "Valhalla" climb, graded as very severe, when a piton worked loose and he fell to the bottom of the face.

A spokesman for the Keswick Mountain Rescue Team who helped to bring him down, said: "He was very fortunate to be wearing a crash helmet. He could have been very seriously hurt."

He was taken to hospital with wrist and shoulder injuries.

The Compton Climber

once again
proves itself a
tough helmet
for a tough job!

reprinted by courtesy of
the 'Newcastle Journal' (17/8/54)
J. Compton Sons & Webb
404/422 Old Ford Road, Old
LONDON E3

F I S H E R

Mountain Equipment Specialists

Borrowdale Road, Keswick

●
"POINT FIVE"
DUVET (*Illustrated*)

Price £19·19·0

PIED D'ELEPHANT

Price £10·10·0
●

FOR OTHER ITEMS OF QUALITY
WRITE FOR OUR
ILLUSTRATED CATALOGUE

FULL POSTAL SERVICE





CAMPING BLANKET/GROUNDSHEET



FISHING



WINDBREAK



ENGINE WARMER



2oz. RESCUE BLANKET



CARAVANS AND BOATS

SPACE

TRADE MARK

BLANKETS

NO PRICE INCREASE

Size: 56" x 84" Weight: 11oz. Price: 68/6d.

Size: 56" x 39" Weight: 8oz. Price: 45/-

RESCUE BLANKET FOR EMERGENCIES, PRICE: 20/-

Available from Sports and Camping Shops

Distributors in the United Kingdom and Eire

SAMS BROTHERS LTD., HODDESDON,
HERTS.

TELEPHONE: HODDESDON 64461/2

ANOTHER
NORTON COMPANY



PRODUCT
WORCESTER, MASS.

AM THE CONTINENT —
EST IN SWITZERLAND

FIRST CHOICE with the experts!

The 'Cairn' rucksack —
designed for climbers by
Brown Best — was chosen
by the American Mount
Everest Expedition and is
currently in use by the
British Trans-Arctic
Expedition.

Well constructed of grey
proofed cotton duck with
heavy duty matching
base. Full length bivouac
sheet. Hood with built-
in zip pocket. Ice axe
mounting straps and
crampon holder.

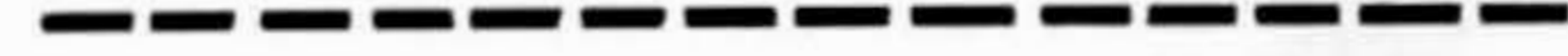
Weight complete 3 lbs.
4 ozs. £6. 19. 6.

Send the coupon for
catalogue and nearest
stockist.



NAME.....
ADDRESS
..... A.I.

BROWN BEST & CO LTD
102 Old Kent Road, London, S.E.1.
'Phone: 01-703 8111-2.



Contact your TRAVEL AGENT for all-inclusive
arrangements within the Travel Allowance
Information: Swiss National Tourist Office,
Swiss Centre, 1 New Coventry Street,
London W. 1, Tel. 01-734 1921



SALES GRAPH

CLIMBING HIGH?

Then Go

HIGHER STILL

By advertising in this Journal!

For details write to

Mr. R. Pettigrew, White Cottage, White Cottage Lane, Tonbridge, Kent.

Telephone: 0732-2 3877 or 0732-2 3544