

# ON TOP OF THE WORLD



MARECHAL FRAMED TENT IN USE IN HIMALAYAN FOOTHILLS

**AS OUR PHOTO SHOWS MARECHAL FRAME TENTS ARE EQUALLY SUITED PROVIDING A FAMILY HOLIDAY HOME OR A BASE CAMP**

**A good idea—why not combine the two next year?  
A MARECHAL tent and Pindisports equipment.**

Full stock kept of all sizes of Viking nylon, also Frost's Alpine hemp. Belays, Abseils, Waist lengths, Prussick loops.

Large selection of Karabiners. British and Italian Climbing Boots; Kletteschune, also HAWKINS 'THE MASTERS' BOOT, A NEW CONCEPTION IN LIGHTWEIGHT BOOTS 85/- pair.

**We stock Karrimor, Chamonix, Pinnacle, Joe Brown, Himalaya and Outward Bound, Lafuma Super Altitude, Brown Best Snowcap, Cairn and Atlas mountaineering rucksacks.**

Large stock of Climbing guide Books kept at our Holborn shop

Our Acton and Croydon shops are open all day on Saturday—9 a.m. to 6 p.m.

# PINDISPORTS



**Shops situated at:**

**14-18 Holborn, London, E.C.1.** (Near Chancery Lane Underground Station)

**373-5 Uxbridge Road, Acton, W.3.** (Nr. Ealing Common Undergrnd. Stn.)

**6-8 Brighton Road, South Croydon, Surrey.** (Near Swan & Sugar Loaf)

HOLBORN late night Thurs. 7 p.m. Early closing Sat. ACTON & CROYDON early closing Wed. 1 p.m.

**Head Office:**

**90-92 ST. JOHN STREET, LONDON, E.C.1.** Telephone CLerkenwell 8505/6



SKIING?  
**CLIMBING?**

follow the

example of SIR JOHN HUNT...use



**GLACIER  
CREAM**

for protection from **SUNBURN**

Glacier Cream shields you from the burning effects of ultra-violet rays, whether direct from the sun, or reflected off snow or ice.

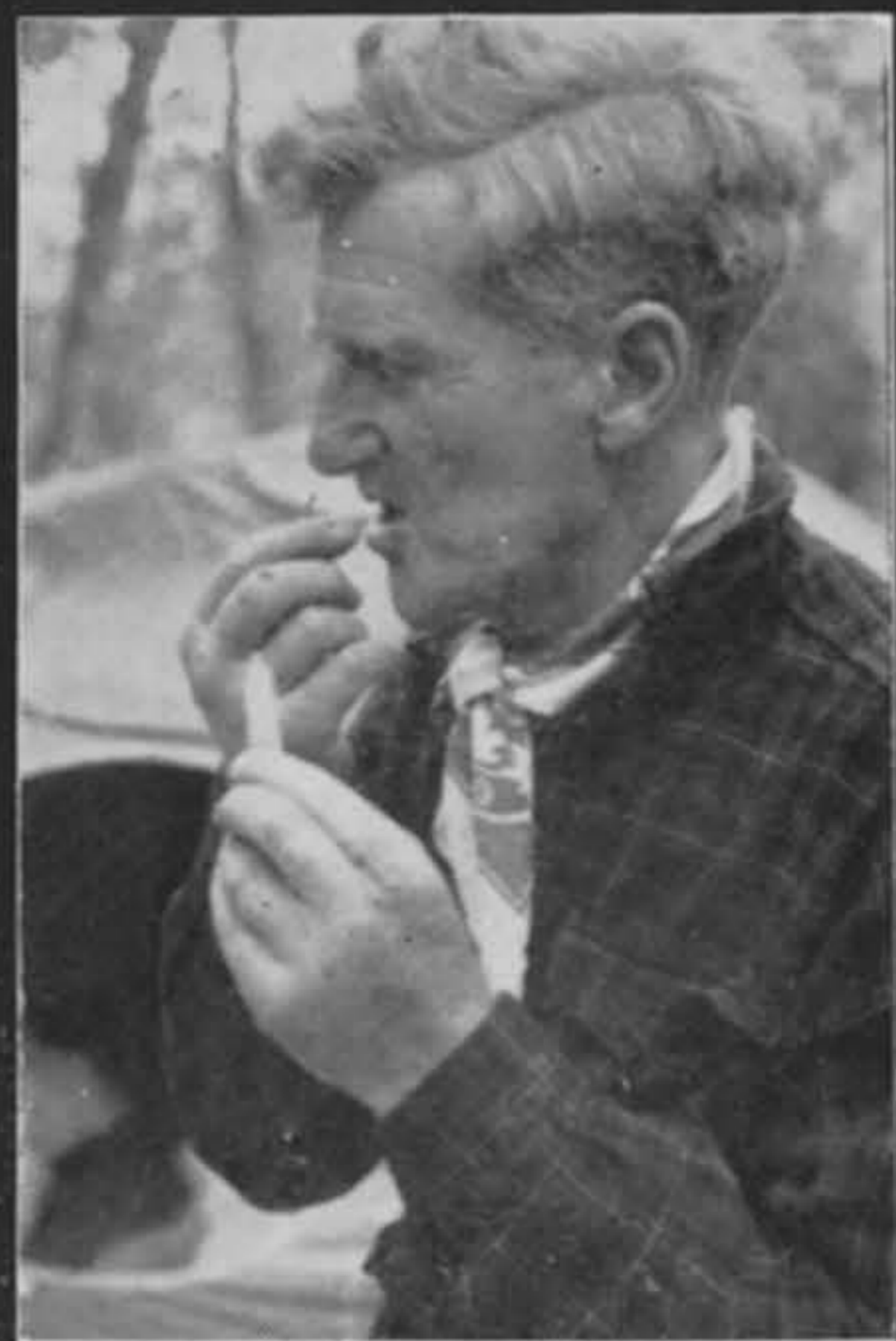
*There are two types:*

**RED LABEL**, as used on Mount Everest, Antarctic Expeditions, The Pamirs, etc., specially formulated for high altitudes but equally effective at lower altitudes, depending on conditions. *Price 3/9 a tube.*

**GREEN LABEL** for low altitudes. *Price 3/- a tube*

Also Lip Salve for all altitudes.

From Chemists and Sports Stores



By Appointment to H.M.  
The Queen, Chemists



**Savory & Moore Ltd.**  
143 New Bond Street, London, W.1

**CLIMB EVERY MOUNTAIN!**

with equipment and clothing from

**POOLE'S OF LEEDS**

SUPPLIERS TO VARIOUS EXPEDITIONS

ANORAKS  
BALACLAVA'S  
COMPASSES  
CRAMPONS  
DUVETS

DESCENDEURS  
ICE AXES  
PITONS  
ETRIERS  
ROPES

RUC SACS  
SLEEPING BAGS  
STOCKINGS  
SOCKS  
TENTS Etc.

**CLIMBING BOOTS READY MADE OR  
MADE TO MEASURE IN OUR OWN WORKSHOPS**

STOCKISTS FOR : LA DOLOMITE : HAWKINS : LAWRIE:  
CASSIN : NORDICA

*For expert advice and service*

CALL, PHONE OR WRITE TO

34-36 EASTGATE  
2 WADE STREET

TEL. 24599  
TEL. 29374

**H. W. POOLE**

**LEEDS 2**



---

*NEW* range of  
**HORLICKS**

Concentrated Foods

---

**OUTDOOR MEALS  
IN MINUTES!**

Six tempting varieties and specially convenient for every outdoor activity, Horlicks single-portion concentrated meals are remarkably light and compact to carry. Weighing only 3½ oz., they yield complete nourishing meals of generous proportions, full of the goodness of prime meat and vegetables. So easy to prepare—just add water, simmer, then enjoy a really marvellous, hot, man-sized meal.

It's made by HORLICKS—it must be good!

*\*Vegetables with Beef Dinner \*Rice, Vegetables with Chicken Dinner  
\*Beef and Vegetable Curry with Rice \*Vegetable Curry with Rice \*Pasta,  
Chicken Dinner in Tomato Sauce \*Pasta, Pork Dinner in Savoury Sauce*

**ONLY 3'- FOR A FULL-SIZED MEAL**

**ALSO AVAILABLE**

**The original Horlicks Concentrated Foods in  
heavy duty packs to withstand rugged conditions**

Specially developed by the world's acknowledged experts in providing High-Calorie Foods and used by many of the most famous names in climbing history including Sir Edmund Hillary (1960 Himalayan Expedition) and Lt.-Col. Mike Banks, R.M. (Rakaposhi, 1958 and Mt. McKinley, 1962).

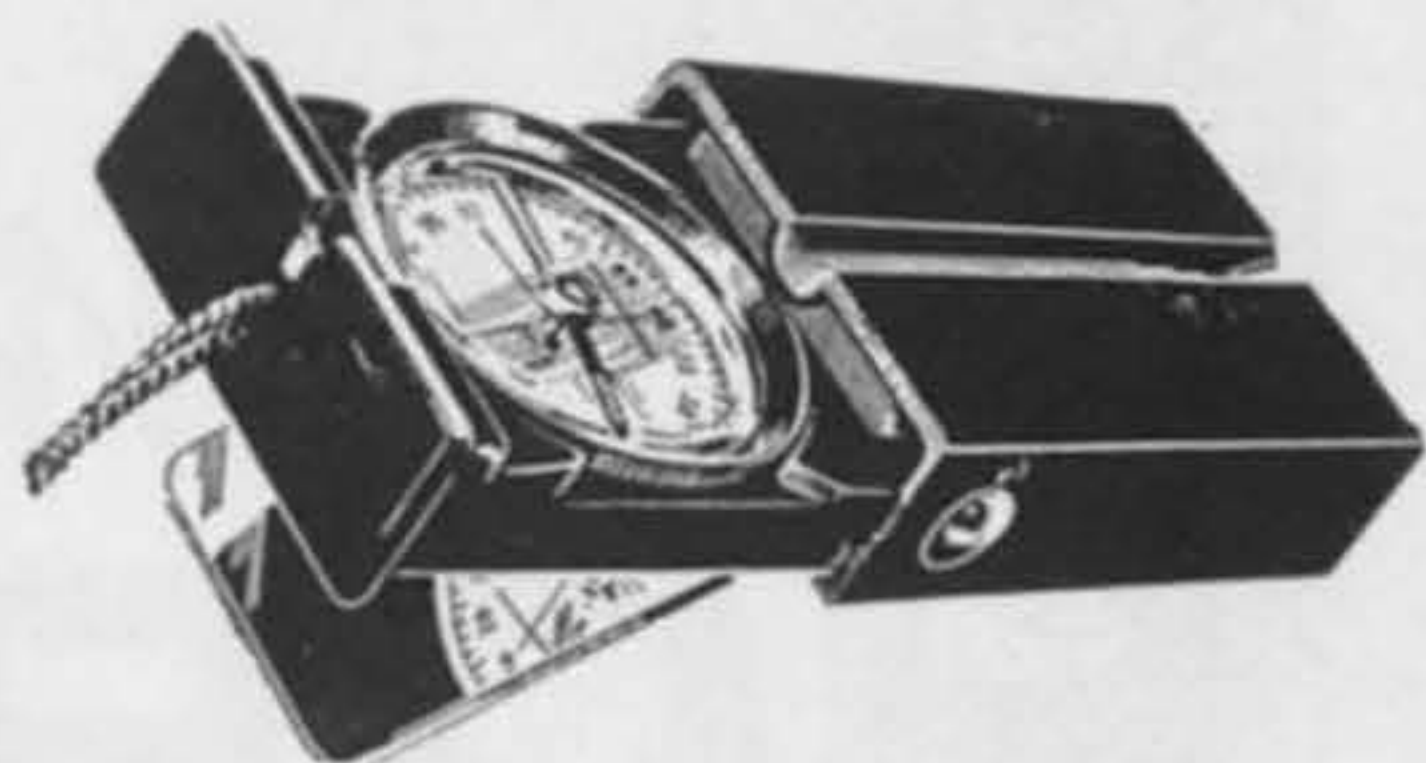
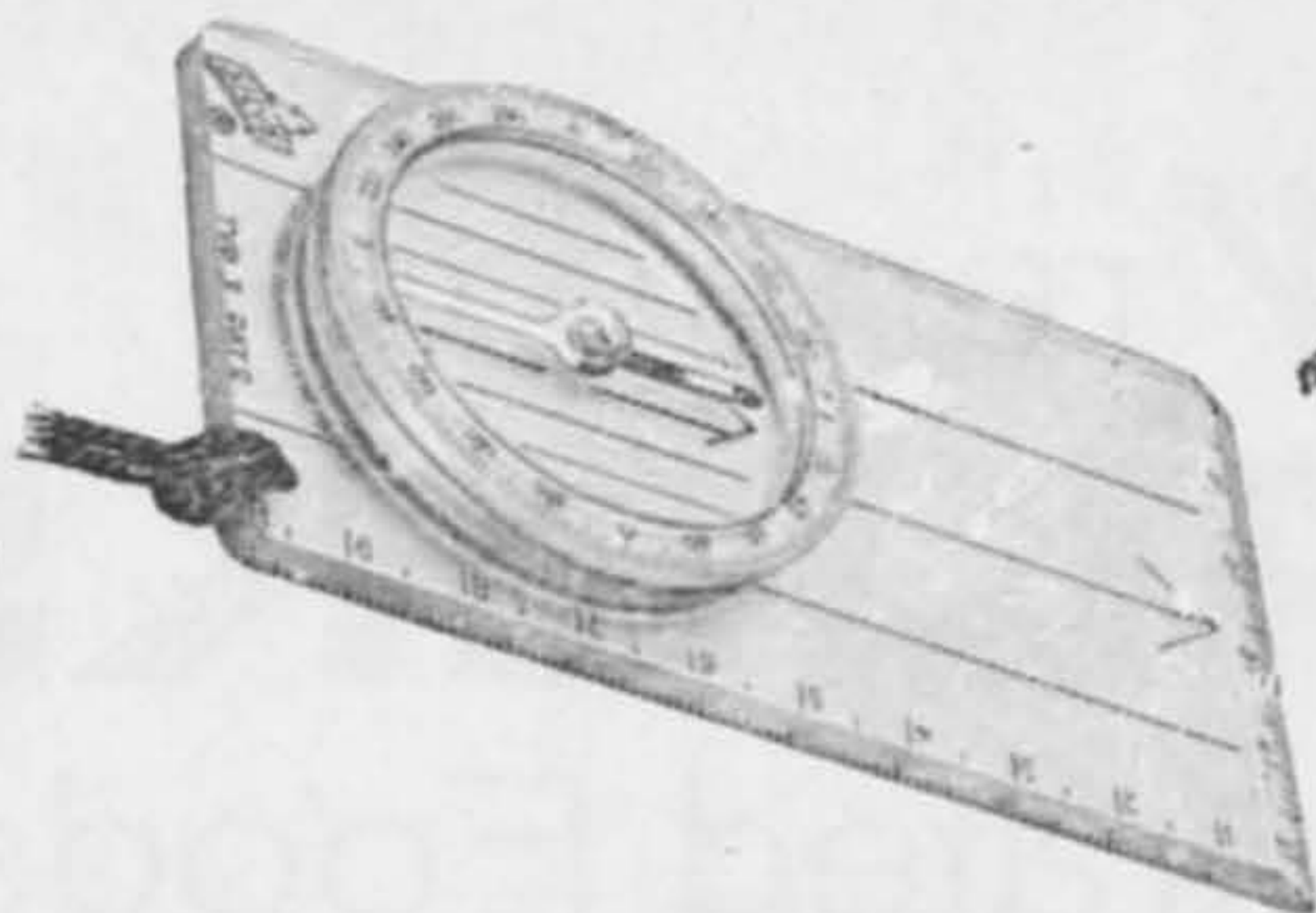
*Please write for price lists and name of nearest stockist to:*

**HORLICKS LIMITED (SERVICES DEPT.) SLOUGH · BUCKINGHAMSHIRE**

---



# The Compass Names of World-Wide Fame



**RECTA**

The fact that there are several million Silva compasses in general use all over the world indicates that people of all continents are placing their trust and faith in these instruments. There is a "Silva" or "Recta" compass for every use.

Trade Enquiries Invited

*Precision made in Sweden and Switzerland by the world's foremost compass manufacturers*

Write for illustrated brochure showing the full range of "Silva" and "Recta" compasses

**B. J. WARD LTD.**

**130 WESTMINSTER BRIDGE ROAD, LONDON, S.E.1**

# EXPEDITIONS ARE OUR BUSINESS...

For a century, leading expeditions have relied on Benjamin Edgington equipment. We therefore have unrivalled experience in designing and manufacturing tents, sleeping bags and other items to meet conditions encountered anywhere in the globe. The wide extent of this experience is demonstrated in every page of our new catalogue, which we shall be pleased to send free on request.



By Appointment  
to  
H.M. The Queen  
Tent and Flag  
Makers

Established  
before  
1795

**BENJAMIN EDGINGTON**

*(Silver & Edgington Ltd.)*

144 SHAFTESBURY AVENUE LONDON W.C.2





## SUMMIT CONFERENCE

"The way to enjoy the achievements of climbing to the full," said the Chairman, "is to leave nothing to chance. In the first place, we must have the best equipment. That means *Viking* as far as ropes are concerned. The range of Viking ropes covers every mountaineering requirement. They're made by the world's largest, most experienced producers of ropes — and rigorous testing at every stage of production guarantees the quality."

It was unanimously decided to equip with Viking.

(All climbing equipment used in the above photograph was supplied by Benjamin Edgington.)

Ask your climbing equipment supplier for full details of Viking ropes.

# VIKING NYLON CLIMBING ROPES

Made by British Ropes Limited.



---

# Climbing Guides

---

*published by  
the Climbers' Club*

---

## RECENTLY REVISED

---

**Cwm Idwal (1958)**  
*by A. J. J. Moulam*

**Clogwyn Du'r Arddu (1963)**  
*by H. I. Banner & P. Crew*

**Snowdon South (1960)**  
*by J. Neill & C. T. Jones*

**Lliwedd (Reprint 1961)**  
*by C. W. F. Noyce & J. M. Edwards*

**South East England (1963)**  
*by E. C. Pyatt, D. G. Fagan, J. V. Smoker*

---

## IN PREPARATION

---

*The Carneddau (1964)*  
*by A. J. J. Moulam*

*Tryfan & Glyder Fach (1964)*  
*by A. J. J. Moulam*

*Llanberis North (1963)*  
*by D. T. Roscoe*

*Llanberis South (1964)*  
*by R. James*

*Cornwall (1963)*  
*by P. H. Biven & U. N. Stevenson*

---

AVAILABLE THROUGH CLIMBING SHOPS and BOOKSELLERS EVERYWHERE

---





# GRENFELL PARKAS REACH NEW HEIGHTS

*Ralph Jones, a member of the  
1962 British-Soviet Pamirs Expedition,  
on Peak of Concord, the first  
ascent of which was made  
during the Expedition, by a joint  
British-Soviet party.*

*The Parkas used on this successful  
expedition were manufactured  
and supplied by Grenfell.*

# GRENFELL

REGD.

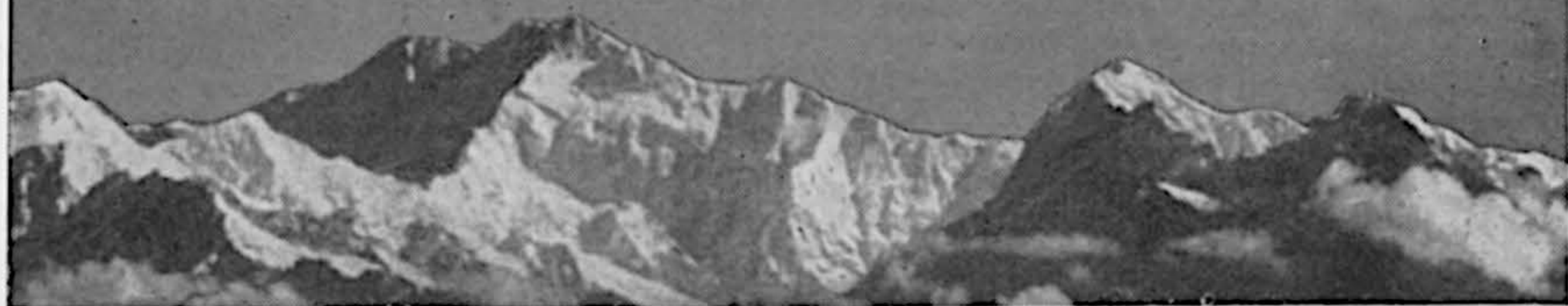


*By Appointment to  
Her Majesty The Queen  
Manufacturers of GORE-TEX  
Hydrochamber 2, Gore Ltd*

HAYTHORNTHWAITE & SONS LTD • BURNLEY • ENGLAND Tel: Burnley 7427



# THE ULTIMATE RANGE



The ultimate mountain range stretches far across the roof of the world, rank upon serried rank, inaccessible except to a chosen few. The ultimate range of Mountaineering Equipment features in page after comprehensive page of the "Good Companions" Catalogue, in clear illustration and detail, accessible to all. Write now, or ask your nearest stockist, for your copy of the "Good Companions" Catalogue, free on request.



## BLACK'S GREENOCK



**THOMAS BLACK & SONS (GREENOCK) LTD.**  
**Industrial Estate, Port Glasgow, Renfrewshire.**

*also at*

22 Gray's Inn Road, London, W.C.1.

132 St. Vincent Street, Glasgow, C.2.

**THOMAS J. GASTON**  
**BOOKSELLERS**



**MOUNTAINEERING**  
**BOOKS**

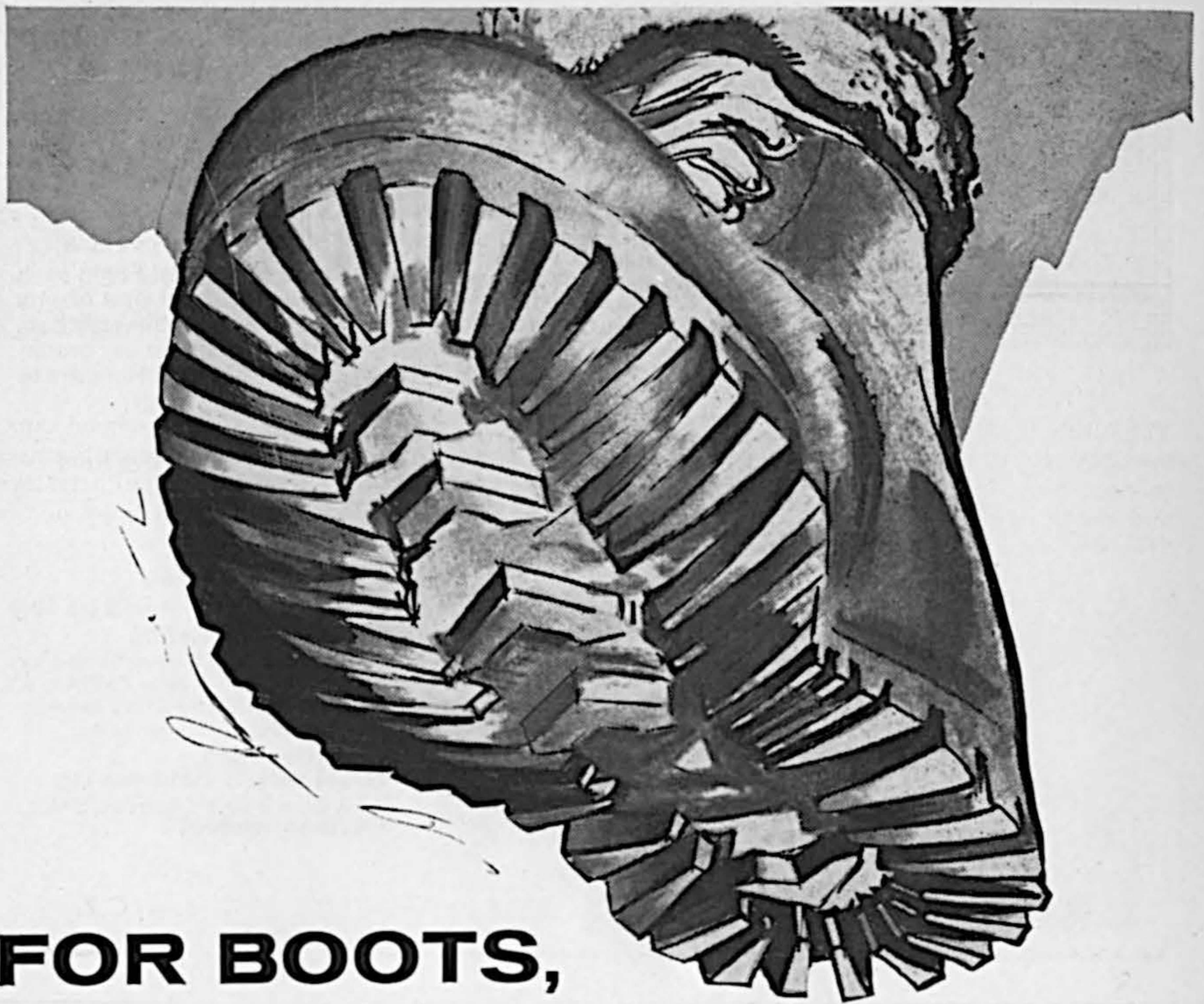
and large selection of guide-books



**13/14, BISHOP'S COURT, CHANCERY LANE,**  
**LONDON, W.C.2**

(Phone: CHAncery 2787)





**FOR BOOTS,**

# TRUST TIMPSON

**FAMOUS TIMPSON VALUE!**

**There is a complete range  
of Timpson Boots up to 130/-**

New 'Vibram' sole and heel or nailed  
Tough, water-resistant leathers  
Designed for the comfort that spells safety  
Men's and Ladies' sizes  
Half-sizes made to order for most styles

**TRUST TIMPSON FOR REPAIRS, TOO**  
Timpson specialise in the skilful repair of climbing boots,  
including re-nailing to your specification.

Whether you're climbing, pot-holing or rambling, trust Timpson underfoot. Timpson boots are designed by men who know the tough conditions they will encounter and made by experts to measure up to those conditions. That's why they are chosen for so many expeditions. Be sure you choose them for yours.

**TIMPSON — THE EXPERTS' CHOICE**

Spitzbergen • Welsh-Himalayan • Anglo-American •  
British, Indian, Nepalese Services Himalayan  
Expedition 1960 • Nuptse Himalayan Expedition  
1961

*Send a postcard to Wm. Timpson Ltd. Gt. Ducie St.,  
Manchester 3 for free copy of fully illustrated  
catalogue.*

# TIMPSON **SHOE SHOPS**

**Wm. TIMPSON LTD · 156/8 OXFORD STREET · LONDON · W1**





## ***Ski Flight Holidays***

Via Geneva - Zurich - Lyons - Venice

Why do more skiers travel Ski Flight each season? Because 75% of our new clients come through personal recommendation. You would be wise to send for our brochure giving details of Ski Flight Holidays to six countries.

**15 day holidays by air**  
(14 nights resort) Fully Inclusive from

**£34. 1. 0.**

**15 day chalet holidays by air**  
Fully Inclusive (less meals) from £ 26 12 0

### **London Winter Sports Centre**

Comprehensive Information Bureau Staffed by Experts; Pre Ski Training; A New Clothing & Equipment Shop; A New Ski Boot Hire Service; Films etc. *the specialists in winter sports*

**SkiFlights**

**World Sport and  
Travel Service (Lairdways Ltd)**  
198-9, Sloane Street, London, S.W.1.  
Tel.: BELgravia 6361.

## **ROBERT LAWRIE, LTD.**

*Alpine and Polar Equipment Specialists*

**54 SEYMOUR STREET, MARBLE ARCH,  
LONDON, W.1**

Telephone: **Paddington 5252**

Telegraphic Address: **Alpinist, Wesdo, London**

Cablegrams:- **Alpinist, London, W.1**

### **Business hours:**

Mon., Tues., Wed. and Friday: 9 a.m.-5.30 p.m.

Late closing: Thursday, 9 a.m.-7 p.m.

Early closing: Saturday, 9 a.m.-12 noon.

**ALL CLIMBING  
CLOTHING AND EQUIPMENT**

**ASK FOR CATALOGUE**







wherever  
people Ski,  
there are...

people in **Ski-MASTER** slacks  
TRADE MARK

- ★ CraftsMAN TAILORED fashion slacks
- ★ Professionally styled
- ★ Silicone proofed stretch material
- ★ Self-supporting waistband
- ★ Unique design of foot strap and waistband.

IN  
**BRI**  
NYLON

*Ski-Master 'Standard'. In Viscose/Bri-Nylon. Mens about 99/11d. Ladies about 79/11d. Ski-Master 'Deluxe'. In Worsted/Bri-Nylon. Mens about £7.19.6d. Ladies about £6.19.6d.*

Available from sports shops and outfitters or contact the manufacturer if in difficulty.

*Bri-Nylon is a registered name of British Nylon Spinners.*

**Ski-MASTER**  
TRADE MARK

ski slacks for men and women

CraftsMAN TAILORED by  
**HARRIS MEYER LTD.**, P.O. Box 14,  
WESTGATE MILLS, LEEDS I. Tel.: 20924.

cal



**NEW AND SECONDHAND BOOKS  
ON MOUNTAINEERING  
IN ALL PARTS OF THE WORLD**

\*

Books on this subject always required to purchase

\*

**FRANCIS EDWARDS LTD.**

83 Marylebone High Street, London, W.1

Tel.: WELbeck 9221

*Established 100 years*

***The Englishman on Ski***

*Edited, with an Introduction, by SIR ARNOLD LUNN.* A fascinating anthology of passages descriptive of the many sides of this sport—the story of Alpine ski-ing from its beginnings, the enchantment of the glaciers in spring, the thrills and perils of ski-mountaineering and ski-racing, and the controversial issues of modern ski-ing. *21/- net*

***Ski Lore and Disorder***

*By JAMES RIDDELL.* Whether old hands or novices, skiers will delight in the amusing verse parodies and drawings which make up this light-hearted book and which will evoke vivid memories of the pleasures and trials of the slopes. *Illustrated 10/- net*

***Let's Look at Switzerland***

*By PATRICK PRINGLE.* A new volume in the Junior Travel Series. *Illustrated 15/- net*

**MUSEUM PRESS**

26 Old Brompton Road London SW7

***Advertisement***

***Department***

All communications concerning advertisements in this *Journal* should be addressed to —

***The Advertisement Manager***

47 Gresham Street,  
London E.C.2

***Telephone***

***MONarch 7644***

100 YEARS HOTEL BEL-ALP

**VALAIS BEL-ALP SWITZERLAND**

**AT THE GREAT ALETSCHEGLACIER**

**7000 feet**

The old English-Climbers home. Wonderfully situated, and commanding the finest views in Switzerland. Splendid centre for excursions and climbing. Partly renovated rooms with running hot-water.

The most ideal place for restful holidays.

Pension from Fr. 18.-20.50

Aerial funicular

All incl Fr. 23.

A. Klingele and family