

head of Dutch Creek by way of low, timbered saddle on S. side of subsidiary E. peak. The S. arête of the main peak is attained, and followed to the summit. Ascent, 5 hrs. 15 mins. Descent, 3 hrs.

(2) *Bugaboo Group.*

PIGEON TOWER, *ca.* 10,200 ft. First ascent, August 6. Mr. E. Cromwell, with P. Kaufmann. From camp at head of Bugaboo Creek, to plateau of Bugaboo Glacier, thence up moraine to foot of Snowpatch Spire. Ascended glacier N. of Snowpatch Spire to col between it and Bugaboo Spire, crossed névé to the S. ridge of Pigeon Tower, and followed it to a vertical step, traversing on the N.W. face to the N. ridge 5 mins. below summit. Descended by the same route to glacier, and returned to camp *via* S.W. arm and main stream of Bugaboo Glacier. Ascent, 7 hrs. 30 mins. Descent, 3 hrs. 35 mins.

CENTRE PEAK, *ca.* 9800 ft. First ascent, August 10. Mr. E. Cromwell, with P. Kaufmann and C. Kain. From camp at head of Bugaboo Glacier, to plateau of Bugaboo Glacier, thence *via* moraine crest to foot of Snowpatch Spire. Crossed S.W. arm of Bugaboo Glacier to saddle in N. ridge, which was followed to summit. Ascent 7 hrs. 45 mins. Descent, 4 hrs.

THIMBLE PEAK, *ca.* 10,000 ft. First ascent, August 11. Mr. E. Cromwell, with P. Kaufmann. From camp at head of Bugaboo Creek, *via* Bugaboo Glacier and S. arm, to col between Thimble and Howser Peak. Ascended E. ridge to summit. Descended W. ridge to col between Thimble and Flat Top. Ascent, 4 hrs. 20 mins. Descent, 20 mins.

FLAT TOP PEAK, *ca.* 10,000 ft. First ascent, August 11. Mr. E. Cromwell, with P. Kaufmann. From col followed E. ridge to summit. Ascent, 1 hr. Descent, *via* W. ridge to glacier and camp, 2 hrs.

VARIOUS EXPEDITIONS, 1930 AND 1890.

Graians.

GRAN PARADISO, 4061 m. = 13,324 ft. *C.A.I. map.* By the N.W. face. July 11, 1930. Signori A. Cretier, L. Bon, and R. Chabod. The N.W. face is the great ice-wall facing towards the Valsavaranche, at the top of the Lavaciù Glacier. It is clearly visible from the Col du Géant. The height of the face is about 500 m. from above the

lower bergschrund ('1' on sketch). The conditions were very good, nearly all hard snow and quite safe except two small bits of about



Drawn by R. Chabod.]

GRAN PARADISO, N.W. FACE AND N. ARÊTE (LEFT).

100 ft. each, one before arriving above the first hump (between '1' and '2' of sketch), the other just before getting to the ridge ('6'). Heavy cutting was here necessary (the second bit is extremely steep and awkward). For the remainder of the ascent they did not

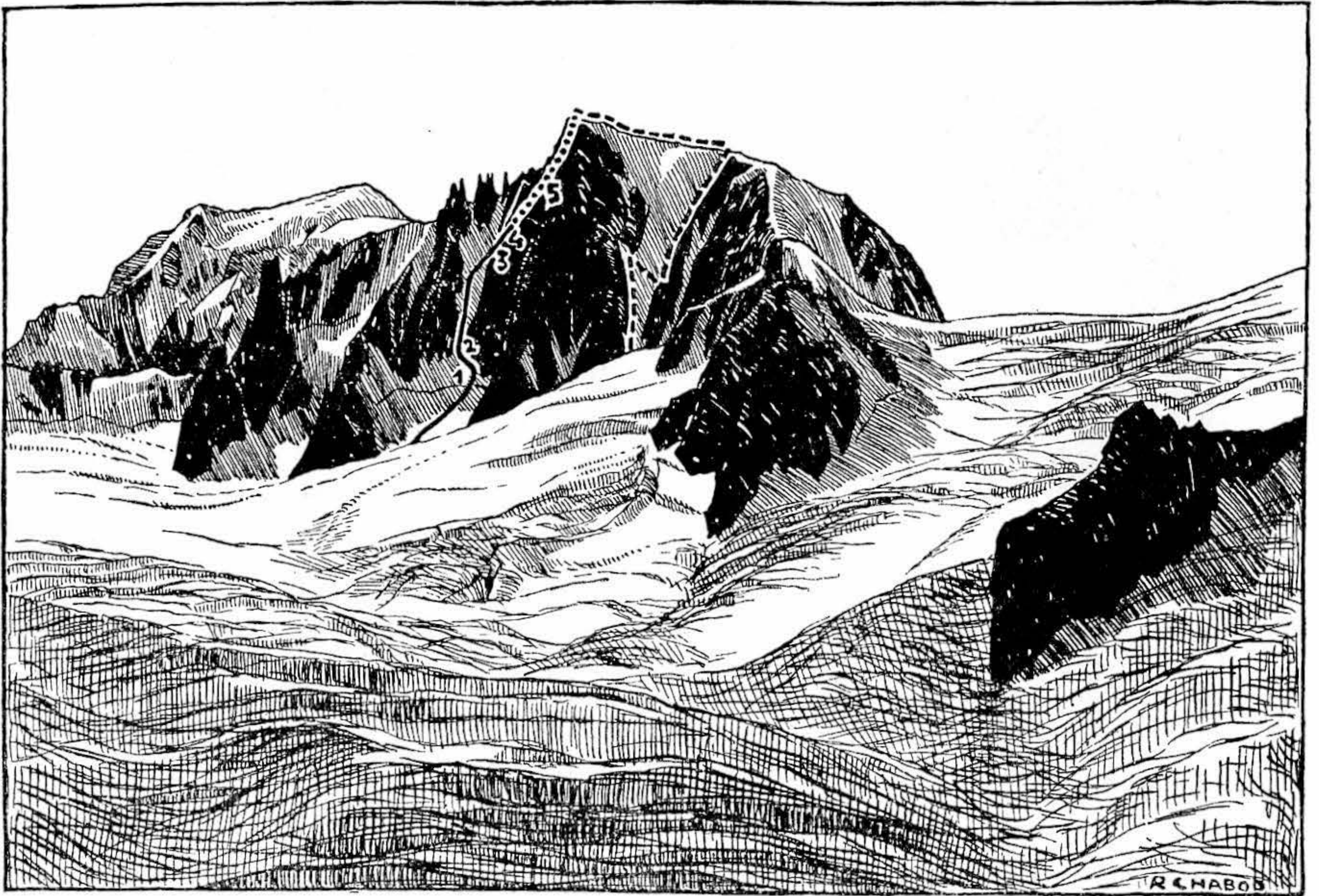
cut any steps as they were using crampons (Cretier and Bon had crampons from Grivel of Courmayeur with 12 spikes, while Chabod had ordinary 'Eckenstein' with 10 spikes; Chabod found that his companions felt safer and went up with greater ease than he did). The little rocky crest towards the middle of the face was not difficult but very steep, and in some places was covered with snow and *verglas*.

Times were as follows: V.E. hut, dep. 03.00; first bergschrund ('1'), 05.00; above '2,' 06.20; first rocks ('3'), 08.20; halt at '4,' 09.15; N. arête, 10.55-11.00; snow summit, 11.20; rocky summit, 11.28-11.45; V.E. hut, arr. 13.00.

Mont Blanc Group.

MONT BLANC DU TACUL, 4249 m. = 13,941 ft. *B.I.K.* By the S.E. face. August 31, 1930. The party was made up in two ropes: 1st—Signori R. Chabod, G. Antoldi, and G. Gallo-Boccalatte; 2nd—M. Gallo and P. Ghiglione.

The route follows in its first half the great couloir descending between the Aiguilles du Diable and Mont Blanc du Tacul; then, bearing to the right on the rock face of Mont Blanc du Tacul, it makes use of a great rocky buttress (not very difficult), which reaches



Drawn by R. Chabod.]

MONT BLANC DU TACUL, S.E. FACE.

Left-hand route is that of 1930; Right-hand is that of 1929.

the main ridge about 150 ft. from the summit. The height from the bergschrund is about 850 m.

After traversing the bergschrund ('1' on sketch) it was necessary to go straight up to a very narrow bit of the great couloir ('2') and traverse the said couloir following the rocks on its true right. They mounted in a straight line on rocks and ice and then again on ice, and afterwards they again traversed the couloir so as to reach the rocks on the true left ('3') a few yards below the point where a secondary couloir joins the big one and forms a Y. Up to this point, on account of the steepness and the quality of the ice (there was a small surface of ice 1 to 2 cm. deep, under which there was snow, so that crampons alone were of no use), they had to cut steps nearly all the way up. Then they traversed the secondary very narrow couloir ('4'), and reached the great buttress which was followed throughout. The rocks for the first part were rather smooth, and it was necessary to keep near the ice of the great couloir; then they became less hard and were finally quite easy in the upper part.

Times were as follows: Rifugio Torino, dep. 03.10; bergschrund, 05.35; halt at '3,' 09.30 to 10.20; second halt at '5,' 12.30 to 13.20; summit, 15.10 to 17.00.; Col du Midi, 18.15; Rifugio Torino, 20.45.

Signor Chabod had reconnoitred the route previously.

AIGUILLES ROUGES DU BROUILLARD, *ca.* 3350 m. = 10,991 ft. No height or name on *B.I.K.*, height only (3353 m.) on *I. map.* August 11, 1930. Signori R. Chabod and G. Gallo-Boccalatte. [See in general *Vallot*, iv, pp. 214-5. These aiguilles, numbering 6 in all, are divided into two groups, S. and N., of three points each. The first had been climbed in August 1870 by Signor A. Durazzo, with Julien Grange and Henri Séraphin, from the Miage Glacier by the S. ridge; the fourth (from S. to N.) in July 1914 by M. Guido Mayer, with Angelo Dibona, by the great couloir facing the Gamba hut; the sixth by Signori G. Polvara, A. Polvara, and M. Zappa on August 10, 1930, by the great arête or buttress to the true right of the couloir descending from the Col du Brouillard to the Brouillard Glacier.]

Signori Chabod and Gallo-Boccalatte reached the S. ridge of Point I straight from the Brouillard Glacier, first by a great step of rather awkward red rocks, and then by easy rocks. They attained a little gap easily seen from, and nearly opposite, the Gamba hut. They then followed the ridge climbing over Point I, going round II (it is only a gendarme) on the Miage side, climbing III (an amusing but not difficult climb) and making its first ascent. This point is the last of the first group, and from it one must descend to a very deep and low depression to climb Point IV (first of N. group). This point is the one climbed by the Mayer-Dibona party. (Two superimposed stones were found on it.) Point V, the summit, afforded a very

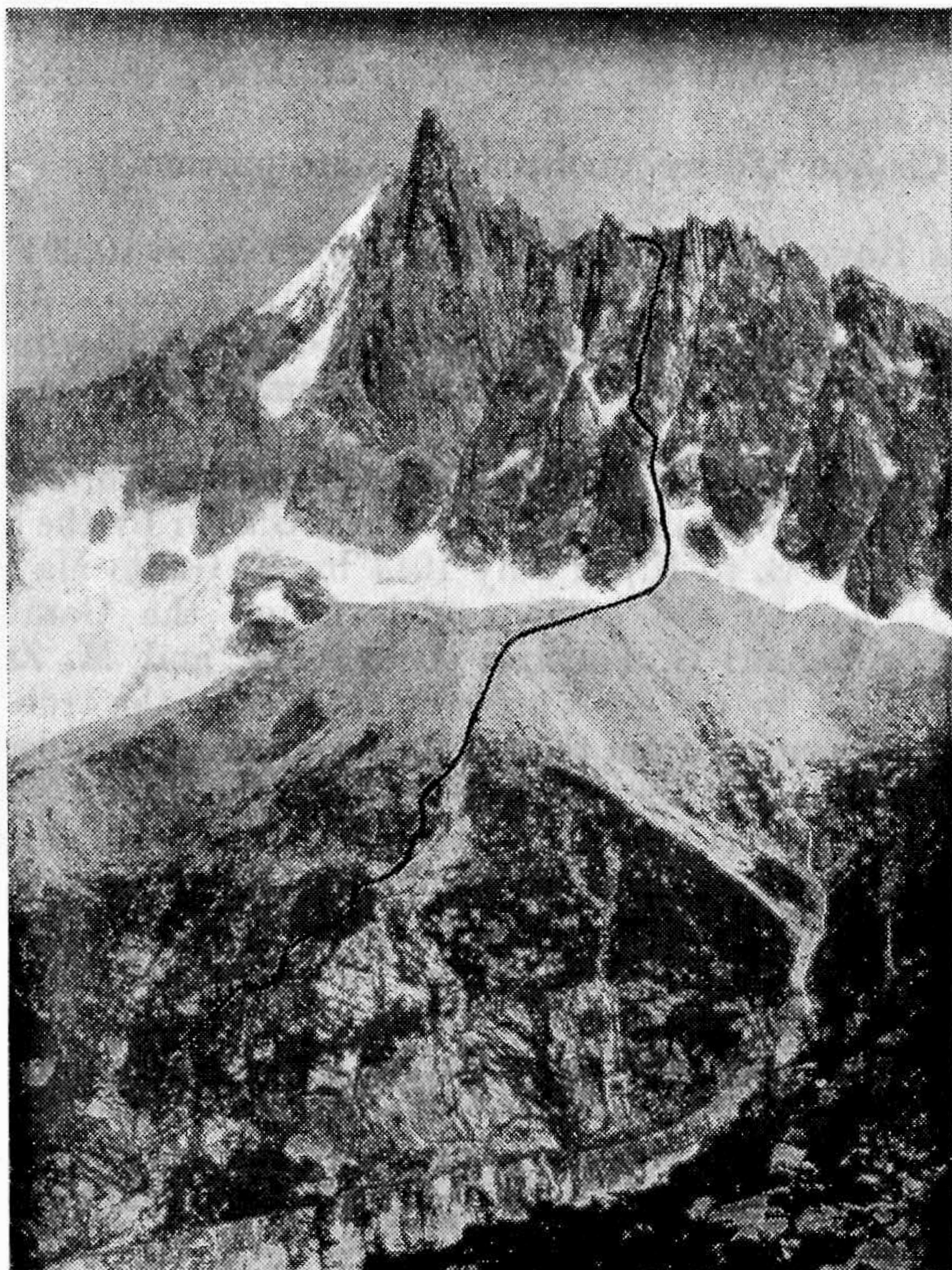
good and rather difficult climb (it had never been ascended). The ascent of VI is easy, but the descent to the Brouillard Glacier, by the route taken the day before by the Polvara party, is the most difficult bit of the whole traverse. Three *rappels* proved necessary.

The traverse in the opposite direction is more advisable, with a 150-ft. spare rope to descend the step of red rocks above the Brouillard Glacier.

Times were as follows: Gamba hut, dep. 04.00; foot of rocks, 04.35; grass terrace above first step of red rocks, 05.35; gap in S. arête, 07.45; Point I, 09.10; Point III, 09.50; Point IV, 11.00; Point V, 11.45; Point VI, 12.35-14.25; Brouillard Glacier, 18.25; Gamba hut, 19.00.

[PETIT DRU, 3732 m. = 12,245 ft. *B.I.K.*] Attempt on the summit from the Montenvers by the N. slope of the S.W. buttress. August 10, 1890. Mr. C. H. Pasteur, with Alfred Simond and Auguste Cupelin.

[In the interests of historical accuracy—where 'new' routes are



PETIT DRU AND FLAMMES DE PIERRE SHOWING 1890 ROUTE.

being claimed daily and even 'first ascents' of boulders on ridges, traversed, but not considered worthy of individual mention by their pioneers—the following note is published :

In *La Montagne*, 1930, pp. 307–11, is a claim by M. Robert Joncquière to having made the above ascent for the first time in 1930. Mr. Pasteur's account is taken from his notes made at the time, and the route is marked on the illustration 'as accurately as possible after an interval of more than forty years.' M. Emile Fontaine, the veteran and leading authority on the Mont Blanc Aiguilles, points out to us that Messrs. Valère Fynn and Oscar Hoek in 1903 accomplished approximately the same expedition. The S.W. buttress of the Petit Dru is, of course, Guido Rey's *Les Flammes de Pierre*, 3322 m., *Vallot*, 'A.J.' 39, 132–3, now absurdly rechristened.]

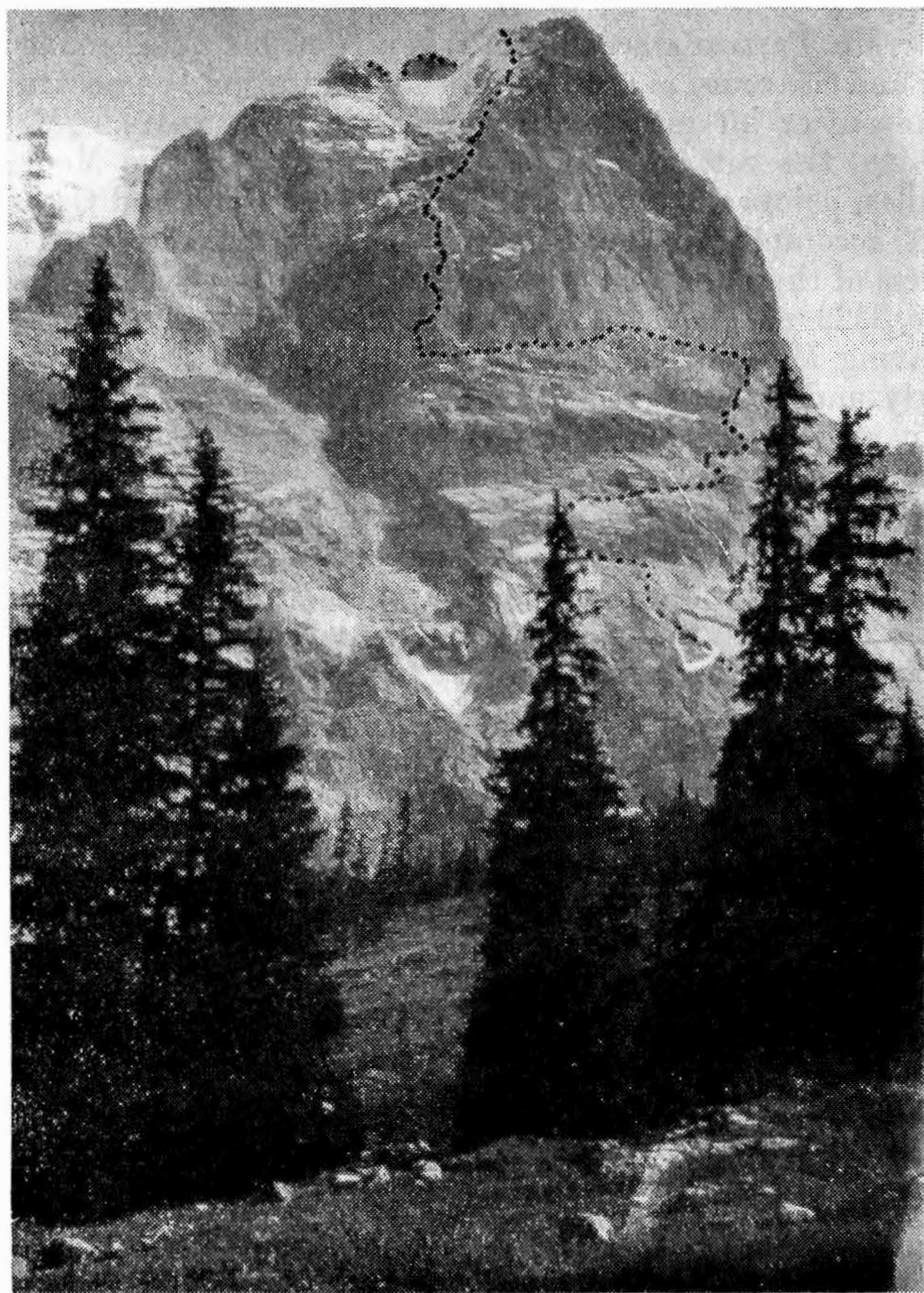
Leaving Montenvers at 2.0 A.M., we crossed the Mer de Glace directly under the hotel and made for the foot of the larger snow couloir on the N. slope of the S.W. buttress, which we ascended. At the top of the couloir we took to the rock arête directly above it and climbed more or less on the arête to a point just to the W. of the big gendarme which is above and on the W. of the gap reached by the ordinary route from the Charpoua Glacier. This point was reached at 11.30 A.M., and, as it was too late to complete the climb, we returned by the ordinary route to the Charpoua Glacier. The climb presented no great difficulty, but the rocks were very loose, and the greatest care was necessary in order to avoid dislodging large boulders. Stones were coming down the couloir on our left, and for that reason we decided *not* to cross the couloir and take a more easterly line which would have brought us direct to the gap where the ordinary route up from the S. side falls in.

[It will be obvious therefore, that the 1930 route has no claim whatever to any novelty.—*Editor*, 'A.J.']

Bernese Oberland.

WETTERHORN, 3703 m. = 12,149 ft. By the N.W. face and arête. August 2, 1930. Mr. W. G. Standring, with Joseph Georges, *le skieur*. Wearing rubbers the party commenced climbing a little N. of the ridge running up from the Grosse Scheidegg at 10.30, intending only to make a preliminary reconnaissance. The lower part of the route traversed smooth slabs forming sloping terraces—first to the left, then to the right. The party worked more to the right, W., than did Dr. Finzi in 1929, and climbed the left-hand one of two vertical 60-ft. chimneys. A long traverse to the left led to the most difficult section of the face—a 60-ft. crack just short of the couloir. The step is very steep, but the rock rough and sound, and on a small ledge at the top the rope was threaded through Dr. Finzi's piton. After an exposed traverse to the right the climbing became gradually easier, but the rock more loose. It was evident that the main difficulties of the face were over, and it was considered that to

continue over the top would not take much longer than to return. The face was left at the level of the glacier overhanging the couloir, and the summit ridge gained over intermittent snow and rock. Two



Photo, J. O. Walker.]

SCHEIDEGG WETTERHORN, SHOWING 1930 ROUTE.

gaps in the ridge divide it into three parts. The rock is very rotten, and a number of gendarmes stand on the two lower sections. The route followed lies close to the crest of the ridge, passing some of the gendarmes a few feet below their tops on right or left, without great difficulty until at the second gap it was necessary to rope down 50 ft. A rope sling in good condition was found here. Most of the ridge was done in a thunderstorm, and the final section proved the most

difficult and awkward part of the whole ascent, wet falling snow giving rubbers no chance on the sloping holds. Progress was very slow, and the summit of the Wetterhorn was not reached until 19.30. At 21.00 darkness overtook the party just above the Rosenloui Glacier, where the night was spent, the descent being continued by the Dossen Hut to Rosenloui in the morning.

The occasion was Joseph Georges's first visit to the mountain, and the achievement demonstrates his remarkable ability in route finding. It was ignorance of the locality which caused a bivouac so near the Dossen hut.

W. G. S.

Dr. Finzi writes: 'I am much obliged to you for showing me the note of the Standring-Georges climb. I feel certain from the photograph that in the main they took my route as far as the ridge leading up to the Scheidegg Wetterhorn and then bore away to the left, S.E., to get on to the N.W. ridge some distance above the Scheidegg Wetterhorn and beyond the first great cleft in the ridge.

'The climb is a very fine achievement, but not justifiable under the conditions in which it was done. In my description of the original expedition I have stated clearly the precautions that *must* be observed in tackling this climb, and the first is that there must be settled fine weather, as, owing to the peculiar nature of the rock, if a party got caught by really bad weather below the great tower, it could neither get up nor down without a large supply of pitons. The climb is really a splendid one, and it would be a great pity if there should be an accident on it as the result of not observing the only conditions under which it is safe. Quite often disasters have been caused by a little lack of foresight like this.'

[This being a guided expedition, the well-merited strictures of Dr. Finzi must be held to apply solely to the professional leader of the party, who, in complete ignorance of the extremely complicated terrain, at a late hour of the day and in doubtful weather, committed himself to the assault. That Joseph Georges was able to accomplish the climb and extricate his party is a tribute to his great technical skill, but, on this occasion, most certainly not to his judgment.—*Editor 'A.J.'*]

Ortler Group.

KÖNIGSSPITZE, 3857 m. = 12,654 ft. *D. & Æ.A.V. map.* By the N.E. face. September 5, 1930. Herren Hans Ertl and Hans Brehm.

[Many routes have been forced up the imposing N.E. face or its buttress, beginning with the first ascent of the mountain by the N.E. face,¹ or *Königswand*, by Professor B. Minnigerode, with J. and A.

¹ The C.A.I. *Guida* (*loc. cit.* p. 162) compares the 1881 ascent to the N. slopes of the Porta Roseg (*Güssfeldtsattel*) or of the Colle del Cengalo, in the Bernina.

Pinggera and P. Reinstadler, on September 21, 1881. The 1930 party claim their route as being the 'first direct ascent of the said face'; it lies slightly to the S.W. of the 1881 route, reaches the crest of the N.E. buttress rather nearer the summit, and is infinitely more exposed to falling ice and stones, since for long hours it lies beneath the huge bulging ice-wall forming the great overhanging snowy cap of the summit.² The route may be described as a thoroughly bad variant to a fine expedition, which itself should be attempted only in early summer with good snow on the face.]

From a bivouac near the base of the *Hinterergrat* of the Ortler the party, starting at 02.00, crossed the Sulden Glacier and climbed up the so-called *Mitschergrat*, the great rock rib separating the two icefalls descending from near the Suldenjoch. Thence they traversed above the southerly icefall in a S. direction to the base of the peak's N.E. face. Hereabouts, 300 ft. above the bergschrund, the danger from falling stones and ice became so grave and continuous that the party endeavoured to find shelter and halted for 30 mins. Then up a gaunt, perpendicular [*sic*] wall of excessively rotten rock; an ice-gully, followed by an ice-slope with rocky and ice-varnished splinters emerging from it, then indicates the route towards the summit some 2000 ft. above. The danger from falls was now somewhat less. By an enormously steep ice slope—to which the party secured themselves [*sic*] with pitons—painful progress continued, till at 14.00 the leader stood immediately under the summit, the overhanging snowy cap. Now almost direct upwards, still over the steepest ice [pitons and *Karabiner* begin to run short], till the leader had run out all the 130 ft. length of the rope. About this spot one of the party got his clothes entangled in his crampons³ and fell heavily: a disaster being just averted. The weather now turned very bad, hail-storms and wind fairly smothering the party. Hands and toes lost all sensation, even the frantic step-cutting of the leader did not suffice for blood circulation. At 17.00 the crest of the N.E. buttress⁴ was attained, the summit through clouds and mist appearing as some 20 m. distant. Without proceeding there the party turned down the edge of the broad S.E. face of the shoulder, thence in a great storm *via* the Königsjoch and Sulden Glacier to the bivouac, 19.00 hrs. From *Der Bergsteiger*.

[A tribute will be paid in certain quarters to the remarkable ingenuity with which the party contrived to deviate into the most dangerous localities, and so obtain for their expedition a dishonourable place among the most inane perpetrated since 1918. But further comment is superfluous.—*Editor*.]

² The 'direct ascent' of the N.E. face would lead *over* the bulge and snow-cap.

³ Cf. *A.J.* 42, 362, footnote 10.

⁴ The N.E. face and buttress are well shown in Mr. Tuckett's sketches, *A.J.* 1, facing 389, 401, and 409.